



BALTIC SEA ACTIVITIES

FOGA ApS has on basis of information received from offshore operators in the Baltic Sea prepared the following newsletter describing present activities:





FOGA ApS
FISHERMENS
INFORMATION
ON OFFSHORE
ACTIVITIES

Trafikhavnsvej 19
 DK-6700 Esbjerg
 Tel.: +45 75 45 11 44

E-Mail: fish.info@foga.dk
 Web page: www.foga.dk

BALTIC SEA ACTIVITIES

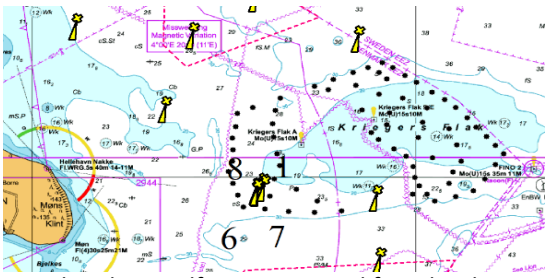
Update of information
Week 4

January 25 - 31, 2024

Next FOGA Info to be distributed, February, 2024

FOGA ApS has on basis of information received from offshore operators at the Baltic Sea prepared the following newsletter describing present activities:

INFO 1.0



VATTENFALL

The offshore windfarm **Danish Kriegers Flak** is situated in the Danish part of the Baltic Sea. The Crew Transfer Vessels (CTV) **TRAVELLER** and **BOLDER** (24/7) operate in the Kriegers Flak area.

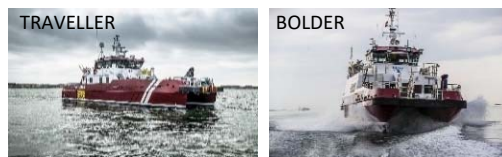
Vattenfall OCC Marine Coordination Centre is in operation 24/7 and can be contacted by VHF CH 16 and 10, as well MCC can be contacted via duty-phone no.: +45 32 240 243.

Vattenfall OCC (MCC) is monitoring the traffic in the area of all Vattenfall OWF.

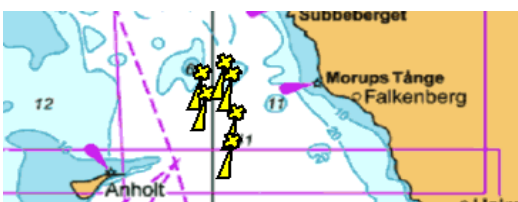
A buoy, with equipment for mussel spat collection in the water column, has been deployed. The buoy is deployed at the following position: 54.58.601'N – 12.47.286'E

Within the windfarm a seaweed farm has been established. The site is marked by 4 yellow buoys. The lines and buoys are in the surface in the seaweed farm at Danish Kriegers Flak and navigation within the marked area should be avoided.

- 1, 54°58.89473502'N, 012°47.69797624'E
- 6, 54°58.54310618'N, 012°47.36581880'E
- 7, 54°58.64355668'N, 012°47.20962837'E
- 8, 54°58.79427409'N, 012°47.85416315'E



INFO 1.1



Vattenfall have deployed a wave buoy as well as a guard buoy in Kattegat, were the Kattegat Syd Wind Farm is planned. The buoys are deployed at below mentioned positions:

Wave buoy:
 KAYD 56° 52 .415'N - 12° 00.458'E

Guard buoy:
 KAYD 56° 52 .490'N - 12° 00.600'E

Both buoys has a yellow light with 5 flashes every 20 sec. with a range of 3 NM: Fl(5) Y 20s



| Station | Lat | Long |
|---------|----------|----------|
| KS1 | 56,85243 | 11,93293 |
| KS2 | 56,8498 | 12,03168 |
| KS3 | 56,80908 | 11,94408 |
| KS4 | 56,76895 | 12,04957 |
| KS5 | 56,7102 | 12,03213 |

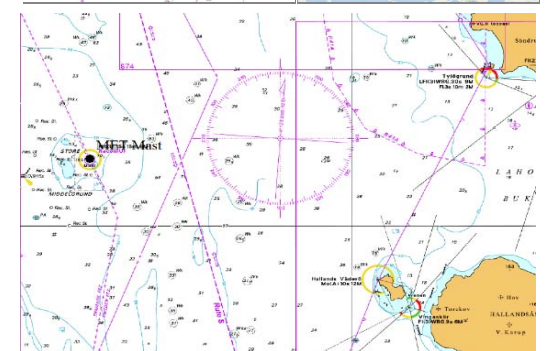
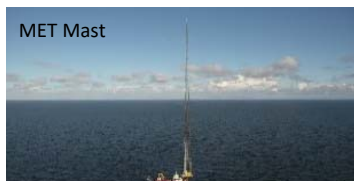
Mariners are requested to keep clear of the buoys.

C-POD stations: On the below mentioned positions Vattenfall have 5 C-POD stations deployed (KS1-KS5) marked with yellow buoys.

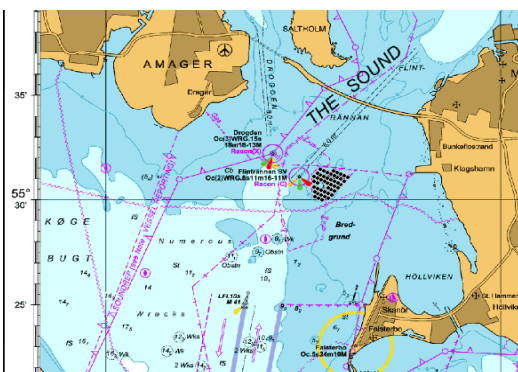


Store Middelgrund - MET Mast

The navigation light of the MET Mast is out of service. On the position: 56°33.7N - 012°06.3E a MET mast is situated on a platform 7 m above mean sea level. The complete height of both mast and platform is approx. 120 m above mean sea level. The construction can be seen at the photo.

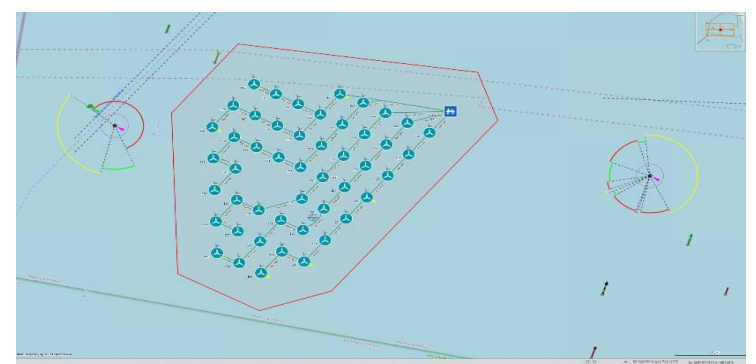


INFO 1.2



The offshore windfarm **Lillgrund** is located approx. 10 km off the coast of Southern Sweden, just South of the Öresund Bridge.

The Crew Transfer Vessel (CTV) **BRINGER** operates in the Lillgrund area.



Vattenfall OCC Marine Coordination Centre is in operation 24/7 and can be contacted by VHF CH 16 and 10, as well MCC can be contacted via duty-phone no.: +45 32 240 243.

Vattenfall OCC (MCC) is monitoring the traffic in the area of all Vattenfall OWF.

INFO 2.0

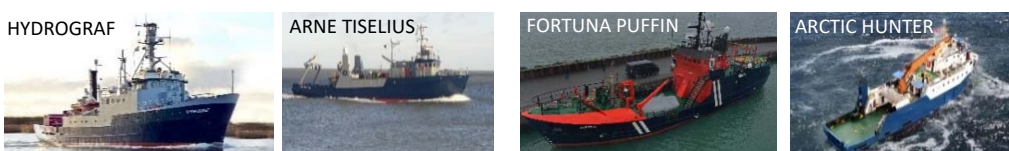
Vessel positions:

The vessel **ARNE TISELIUS** is conducting environmental survey in the Baltic Sea.

The vessel **HYDROGRAF** is conducting environmental survey in the Baltic Sea.

The vessel **FORTUNA PUFFIN** is conducting environmental survey in the Baltic Sea.

The vessel **ARCTIC HUNTER** is acting as guard vessel in the Baltic Sea.





**FOGA ApS
FISHERMENS
INFORMATION
ON OFFSHORE
ACTIVITIES**

Trafikhavnsvej 19
DK-6700 Esbjerg
Tel.: +45 75 45 11 44
E-Mail: fish.info@foga.dk
Web page: www.foga.dk

BALTIC SEA ACTIVITIES

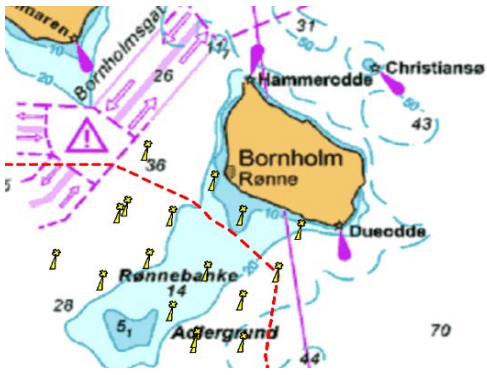
**Update of information
Week 4**

January 25 - 31, 2024

Next FOGA Info to be distributed, February 1, 2024

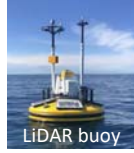
FOGA ApS has on basis of information received from offshore operators at the Baltic Sea prepared the following newsletter describing present activities:

INFO 3.0

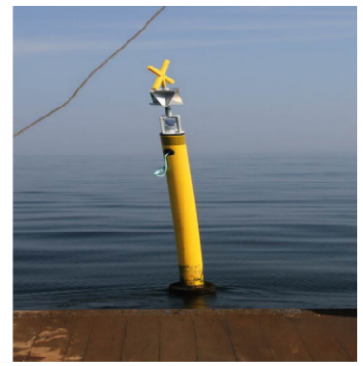
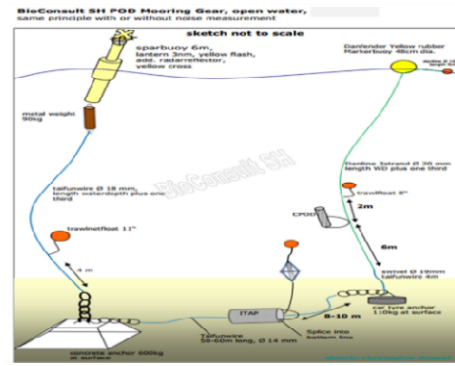
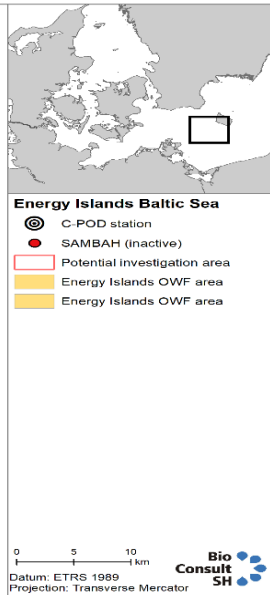
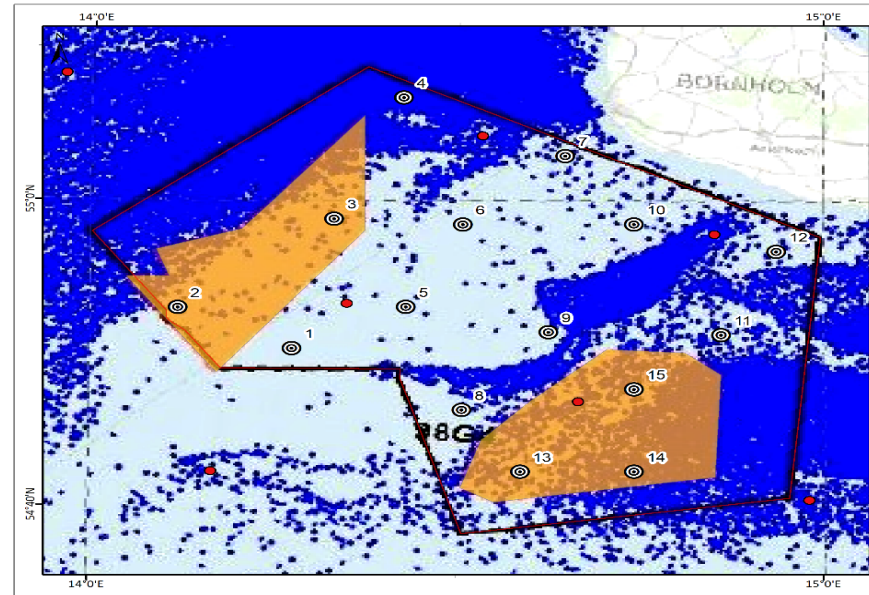


ENERGINET
Eltransmission

During the coming year Energinet will be carrying out metrological and oceanographic measurements Southwest and West of Bornholm, where offshore windfarms are to be located.

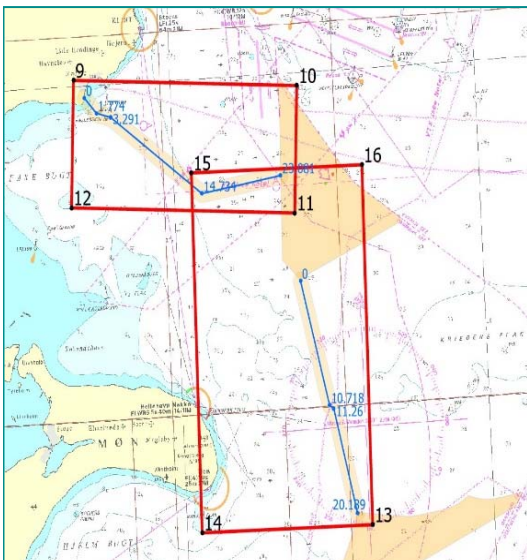


Energinet has deployed 15 C-POD stations in the area around the two designated areas for the two new wind farm areas approx. 20 km Southwest and South of Rønne. The C-POD stations have been selected to cover the entire area, so that it can be investigated how the marine mammals use the area. The C-POD stations will be in operation for 24 months to cover all seasons and variations between years. The stations will be serviced mid-season to guarantee one month of data per season. The stations and the individual C-PODs are equipped with GPS locating equipment so that they can be located in the event of their disappearance.



| Station | (WGS 84, DD°MM) | (WGS 84, DD°MM) | (WGS 84, DD) | (WGS 84, DD) |
|---------|-----------------|-----------------|--------------|--------------|
| 1 | 54° 50.34' N | 14° 16.46' E | 54,8390118 | 14,2743266 |
| 2 | 54° 52.97' N | 14° 07.06' E | 54,8829094 | 14,1176595 |
| 3 | 54° 58.82' N | 14° 19.80' E | 54,9804015 | 14,3300611 |
| 4 | 55° 06.77' N | 14° 25.42' E | 55,1128945 | 14,4236763 |
| 5 | 54° 53.09' N | 14° 25.76' E | 54,8847734 | 14,4293883 |
| 6 | 54° 58.50' N | 14° 30.37' E | 54,9749764 | 14,5062260 |
| 7 | 55° 02.99' N | 14° 38.76' E | 55,0498894 | 14,6459452 |
| 8 | 54° 46.37' N | 14° 30.42' E | 54,7727805 | 14,5070071 |
| 9 | 54° 51.47' N | 14° 37.47' E | 54,8577788 | 14,6244922 |
| 10 | 54° 58.54' N | 14° 44.43' E | 54,9757019 | 14,7405676 |
| 11 | 54° 51.32' N | 14° 51.62' E | 54,8553234 | 14,8602665 |
| 12 | 54° 56.77' N | 14° 56.13' E | 54,9461062 | 14,9355779 |
| 13 | 54° 42.34' N | 14° 35.23' E | 54,7056757 | 14,5871000 |
| 14 | 54° 42.37' N | 14° 44.54' E | 54,7061050 | 14,7422912 |
| 15 | 54° 47.76' N | 14° 44.50' E | 54,7959720 | 14,7417198 |

| Description | Longitude | Latitude |
|---------------------------------|-------------|-------------|
| LIDAR buoy 3 | 14°21.34' E | 54°59.69' N |
| LIDAR buoy 4 | 14°35.29' E | 54°43.02' N |
| Salinity and temperature string | 14°35.24' E | 54°42.97' N |

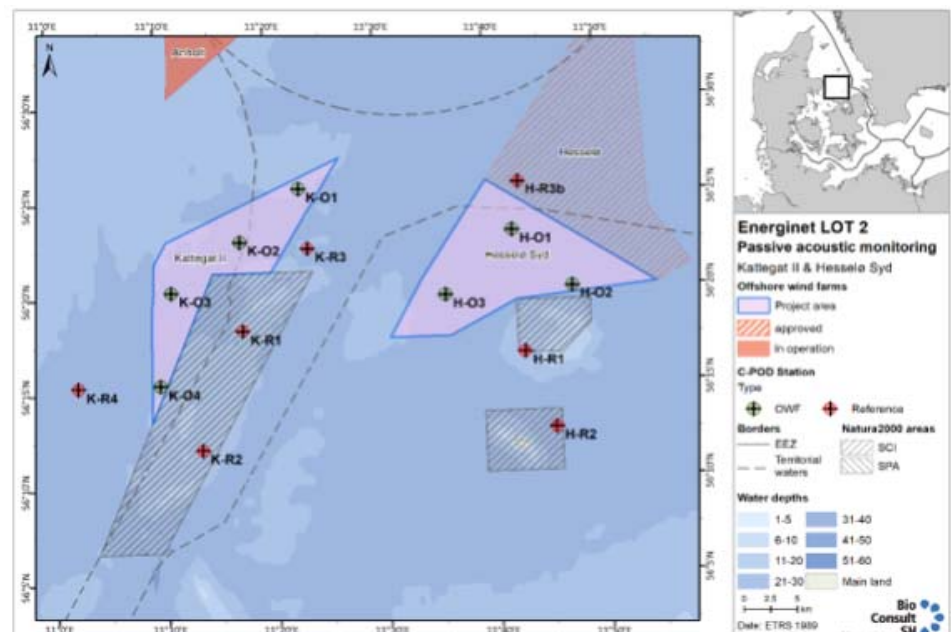
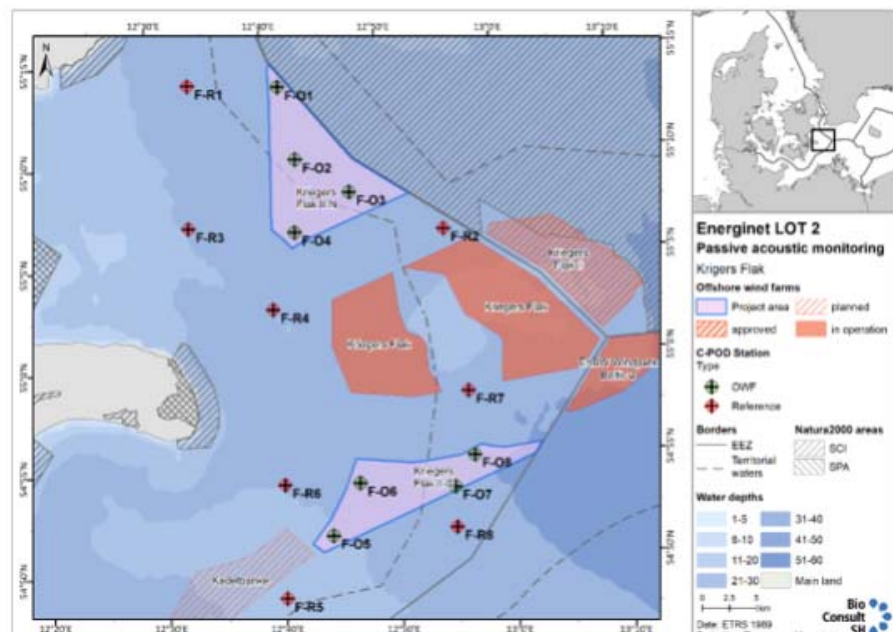


The vessel **GEO OCEAN IV** has temporary left the Krigeres Flak. The vessel is expected to resume the work approx. February 1, 2024.

| | | |
|----|---------------|----------------|
| 9 | 55° 15.289' N | 012° 20.504' N |
| 10 | 55° 14.426' N | 012° 42.446' N |
| 11 | 55° 08.757' N | 012° 41.739' N |
| 12 | 55° 09.618' N | 012° 19.849' N |
| 13 | 54° 54.639' N | 012° 48.054' N |
| 14 | 54° 54.776' N | 012° 31.389' N |
| 15 | 55° 10.842' N | 012° 31.738' N |
| 16 | 55° 10.702' N | 012° 48.515' N |

| 1: Kattegat II | 2: Hesselø Syd | 3: Krigeres Flak II Nord | 4: Krigeres Flak II Syd |
|---------------------------|---------------------------|--------------------------|--------------------------|
| 56°27.182'N, 011°26.513'E | 56°25.711'N, 011°39.922'E | 55°14.829'N, 12°40.754'E | 54°55.018'N, 13°02.111'E |
| 56°22.647'N, 011°09.375'E | 56°20.157'N, 011°55.063'E | 55°08.123'N, 12°52.360'E | 54°50.715'N, 12°43.424'E |
| 56°13.298'N, 011°08.839'E | 56°17.609'N, 011°36.317'E | 55°05.714'N, 12°42.013'E | 54°53.725'N, 12°45.553'E |
| 56°21.118'N, 011°20.251'E | 56°17.666'N, 011°30.117'E | 55°06.685'N, 12°40.304'E | 54°55.326'N, 12°56.524'E |

Energinet has deployed a number of CPOD stations in the areas 1 - 4.





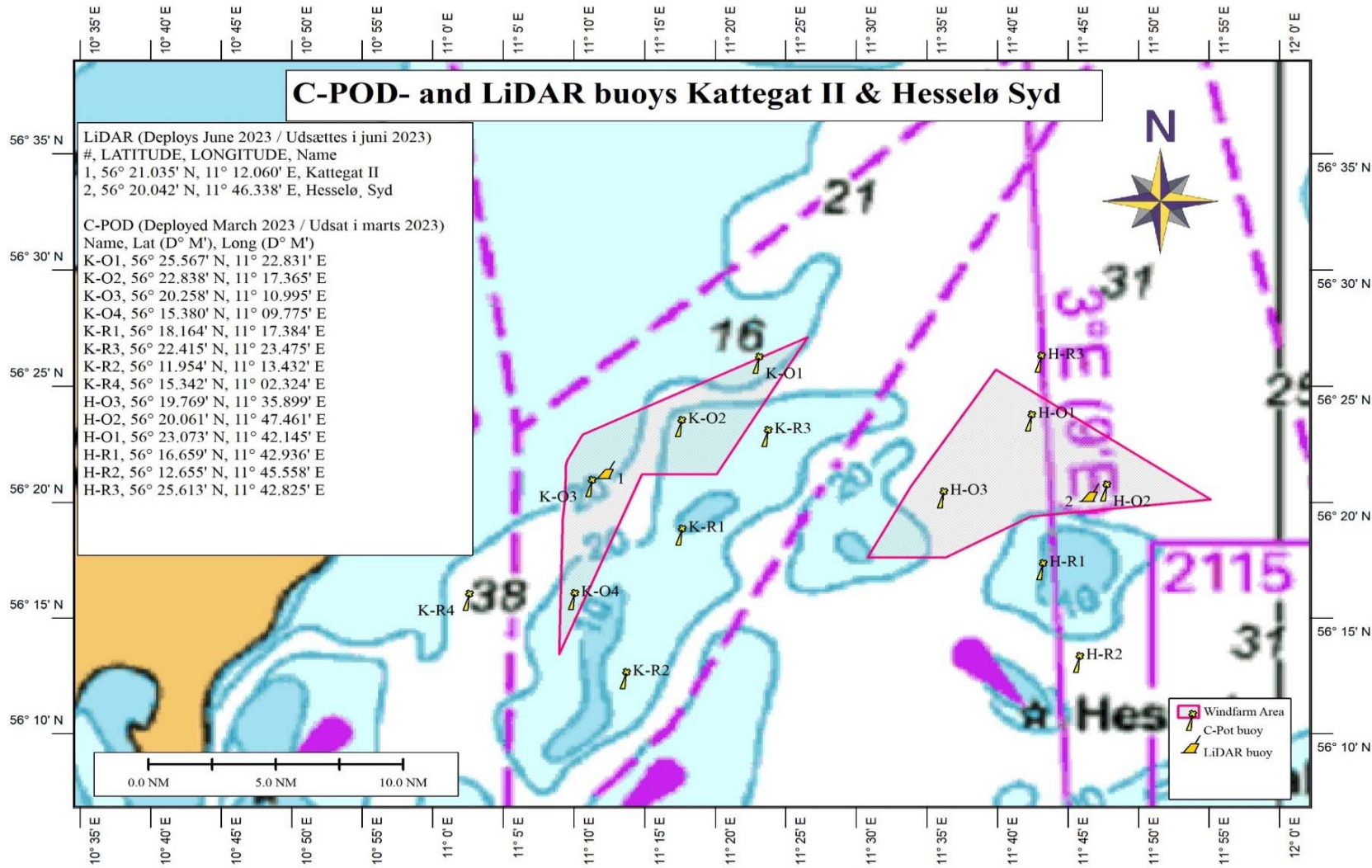
FOGA ApS has on basis of information received from offshore operators at the Baltic Sea prepared the following newsletter describing present activities:

On behalf of Energinet 2 buoys have been deployed with a light a and yellow topmarking.

| Station | Breddegrad | Længdegrad | Vanddybde |
|-------------|--------------|--------------|-----------|
| | [°N] | [°E] | |
| Kattegat II | 56° 21,0348' | 11° 12,0594' | 20,8m |
| KGII-1-LB | 56,35058° | 11,20099° | |
| Hesselø Syd | 56° 20,0412' | 11° 46,3374' | 22,6m |
| HS-1-LB | 56,33402° | 11,77229° | |

The below mentioned lists shows the positions for the C-POD stations deployed in the area 1 - 4:

| Typ | Name | Area | Lat (D°) | Long (D°) | Lat (D° M') | Long (D° M') |
|-----------|------|----------------------|----------|-----------|-------------|---------------|
| OWF | K-O1 | Kattegat2 | 56,42612 | 11,380518 | 56° 25.567' | 11° 22.831' E |
| OWF | K-O2 | Kattegat2 | 56,38063 | 11,289414 | 56° 22.838' | 11° 17.365' E |
| OWF | K-O3 | Kattegat2 | 56,33763 | 11,18325 | 56° 20.258' | 11° 10.995' E |
| OWF | K-O4 | Kattegat2 | 56,25634 | 11,162913 | 56° 15.380' | 11° 09.775' E |
| Reference | K-R1 | Kattegat2 | 56,30273 | 11,289738 | 56° 18.164' | 11° 17.384' E |
| Reference | K-R3 | Kattegat2 | 56,37358 | 11,391245 | 56° 22.415' | 11° 23.475' E |
| Reference | K-R2 | Kattegat2 | 56,19923 | 11,223871 | 56° 11.954' | 11° 13.432' E |
| Reference | K-R4 | Kattegat2 | 56,25571 | 11,038729 | 56° 15.342' | 11° 02.324' E |
| OWF | H-O3 | Hesselø Syd | 56,32948 | 11,598312 | 56° 19.769' | 11° 35.899' E |
| OWF | H-O2 | Hesselø Syd | 56,33435 | 11,791024 | 56° 20.061' | 11° 47.461' E |
| OWF | H-O1 | Hesselø Syd | 56,38455 | 11,702416 | 56° 23.073' | 11° 42.145' E |
| Reference | H-R1 | Hesselø Syd | 56,27766 | 11,715596 | 56° 16.659' | 11° 42.936' E |
| Reference | H-R2 | Hesselø Syd | 56,21092 | 11,759293 | 56° 12.655' | 11° 45.558' E |
| Reference | H-R3 | Hesselø Syd | 56,42688 | 11,713746 | 56° 25.613' | 11° 42.825' E |
| OWF | F-O1 | Kriegers Flak II - N | 55,22768 | 12,690192 | 55° 13.661' | 12° 41.412' E |
| OWF | F-O4 | Kriegers Flak II - N | 55,10812 | 12,704763 | 55° 06.487' | 12° 42.286' E |
| OWF | F-O3 | Kriegers Flak II - N | 55,13894 | 12,786561 | 55° 08.336' | 12° 47.194' E |
| OWF | F-O2 | Kriegers Flak II - N | 55,16774 | 12,710919 | 55° 10.065' | 12° 42.655' E |
| Reference | F-R2 | Kriegers Flak II - N | 55,10518 | 12,920309 | 55° 06.311' | 12° 55.219' E |
| Reference | F-R3 | Kriegers Flak II - N | 55,11517 | 12,551529 | 55° 06.910' | 12° 33.092' E |
| Reference | F-R1 | Kriegers Flak II - N | 55,23206 | 12,559632 | 55° 13.924' | 12° 33.578' E |
| Reference | F-R4 | Kriegers Flak II - N | 55,04585 | 12,668195 | 55° 02.751' | 12° 40.092' E |
| OWF | F-O5 | Kriegers Flak II - S | 54,85853 | 12,738946 | 54° 51.512' | 12° 44.337' E |
| OWF | F-O8 | Kriegers Flak II - S | 54,91879 | 12,948089 | 54° 55.127' | 12° 56.885' E |
| OWF | F-O7 | Kriegers Flak II - S | 54,89352 | 12,917329 | 54° 53.611' | 12° 55.040' E |
| OWF | F-O6 | Kriegers Flak II - S | 54,90039 | 12,780795 | 54° 54.023' | 12° 46.848' E |
| Reference | F-R6 | Kriegers Flak II - S | 54,90191 | 12,672705 | 54° 54.114' | 12° 40.362' E |
| Reference | F-R8 | Kriegers Flak II - S | 54,8603 | 12,917251 | 54° 50.786' | 12° 55.965' E |
| Reference | F-R7 | Kriegers Flak II - S | 54,97153 | 12,943873 | 54° 58.292' | 12° 56.632' E |
| Reference | F-R5 | Kriegers Flak II - S | 54,809 | 12,667616 | 54° 48.540' | 12° 40.057' E |



INFO 4.0

Denmark. The Baltic Sea. Bornholm NE. Gas leak. Restricted area.

Details **Until further notice**, due to obstructions on the seabed in connection with damage of the gas pipeline, a **restricted area** has been established within a distance of 1nm from positions 1) and 2). Anchoring, fishing and working on the seabed is not recommended in the area.

- 1) 55° 32.117'N - 015° 42.169'E
- 2) 55° 32.017'N - 015° 41.959'E

Denmark. The Baltic Sea. Bornholm SE. Gas leak. Restricted area.

Details **Until further notice**, due to obstructions on the seabed in connection with damage of the gas pipeline, a **restricted area** has been established within a distance of 1nm from positions 1) and 2). Anchoring, fishing and working on the seabed is not recommended in the area.

- 1) 54° 52.623'N - 015° 24.529'E