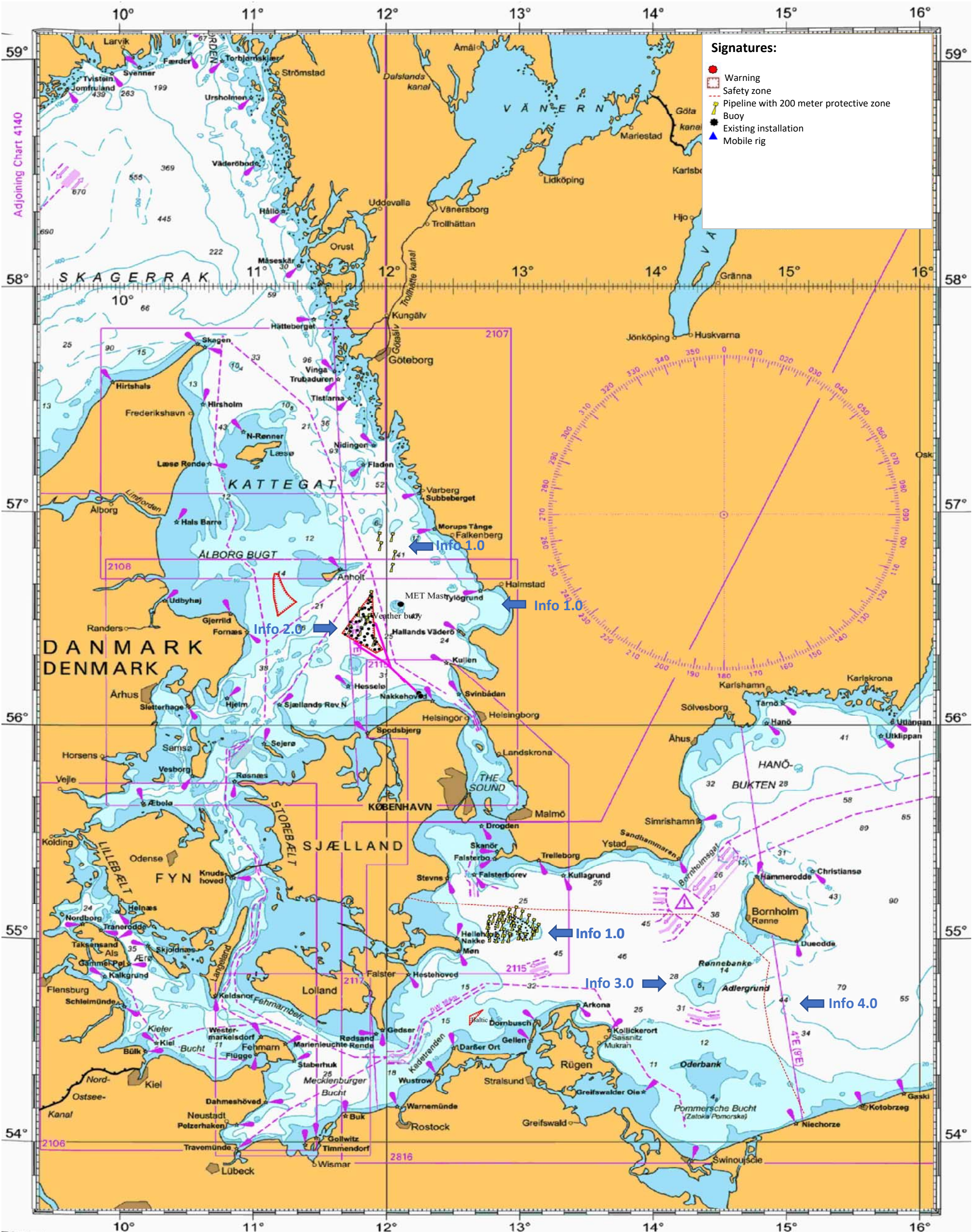




FOGA ApS has on basis of information received from offshore operators in the Baltic Sea prepared the following newsletter describing present activities:





**FOGA ApS
FISHERMENS
INFORMATION
ON OFFSHORE
ACTIVITIES**

FOGA ApS has on basis of information received from offshore operators at the Baltic Sea prepared the following newsletter describing present activities:

Trafikhavnsvej 19
DK-6700 Esbjerg
Tel.: +45 75 45 11 44

E-Mail: fish.info@foga.dk
Web page: www.foga.dk

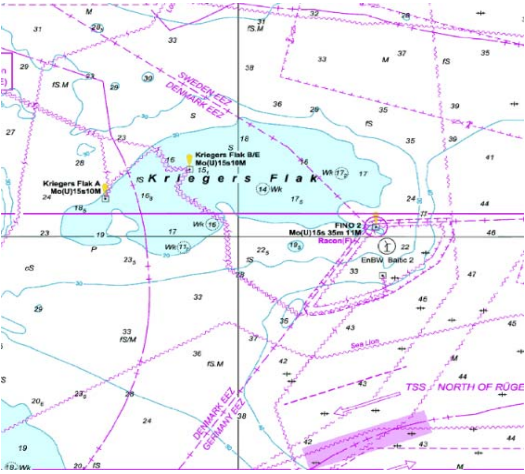
BALTIC SEA ACTIVITIES

**Update of information
Week 17**

April 29 - Maj 05, 2021

Next FOGA Info to be distributed, Maj 06, 2021

Info 1.0



VATTENFALL

The company **Vattenfall** are building the offshore windfarm Danish Kriegers Flak, situated in the Danish part of the Baltic Sea within below mentioned positions. The offshore construction site is a Prohibited Area for non-project vessels, all unauthorized navigation, diving, anchoring, fishery and work on the seabed is strictly prohibited.

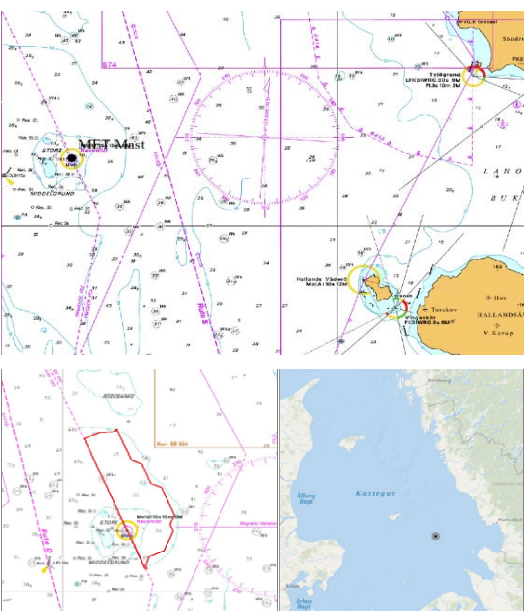
The Crew Transfer Vessels (CTV) **TRAVELLER, BOLDER, CWIND RENEGADE, CWIND ARTIMUS** and **FOB SWATH 2,3 & 8** are in the Kriegers Flak area.

The Jack-up barge **VOLE AU VENT** is working in the Kriegers Flak East.

All **72 Monopiles including TPs** are installed. Construction site boundary is marked by buoys. **48 Turbines** have been installed in DKF West until now.

Kriegers Flak Marine Coordination Centre (DKF MCC) has been established by **Vattenfall** and is in operation 24/7 in the office in Esbjerg and can be contacted by duty-phone No.: +45 27 88 08 33.

DKF MCC and guard vessel **SØLØVEN** are monitoring traffic in the area and at the construction site and listening on VHF ch.10 and 16.



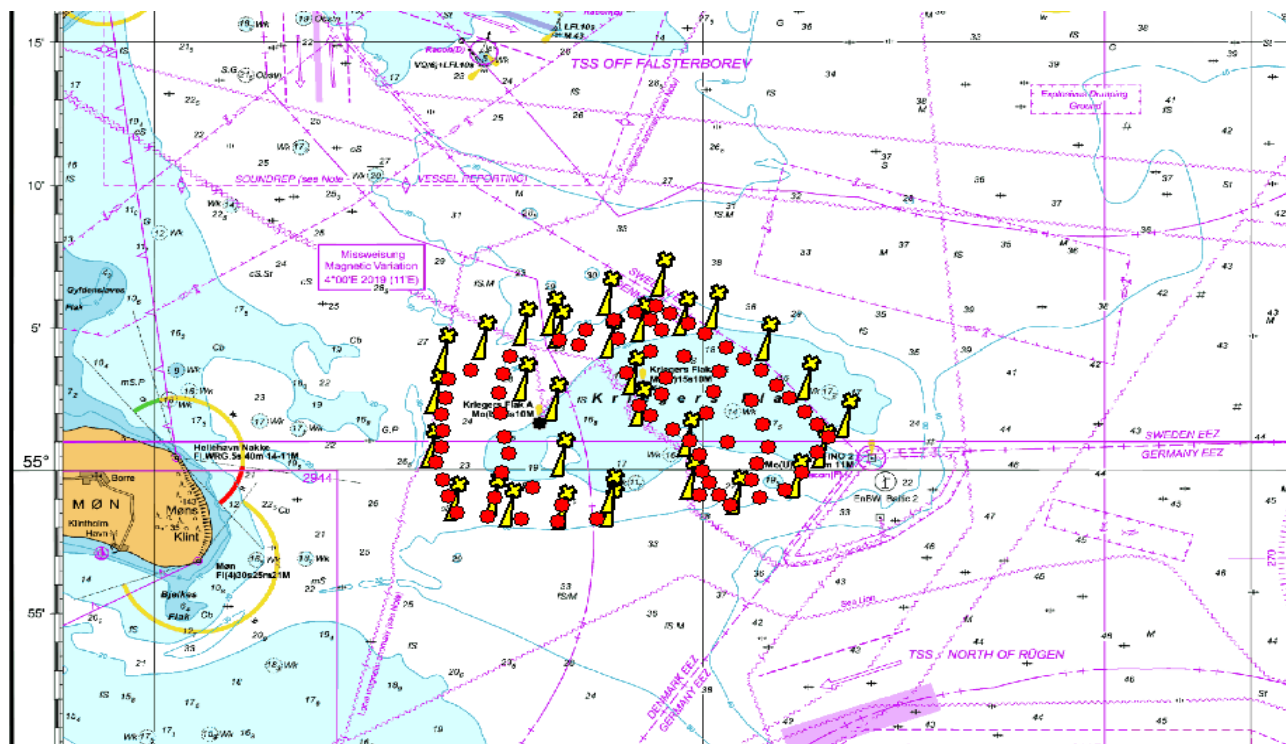
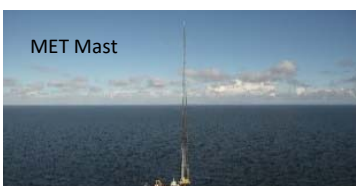
1	NW1	55°03.437 N	012°45.568 E	15	S4	54°57.945 N	012°52.096 E
2	N1	55°03.887 N	012°47.658 E	16	S5	54°58.036 N	012°49.163 E
3	N2	55°04.376 N	012°49.921 E	17	SW1	54°58.241 N	012°46.116 E
4	N3	55°04.742 N	012°51.459 E	18	W1	55°00.079 N	012°44.874 E
5	N4	55°05.422 N	012°54.503 E	19	W2	55°02.017 N	012°45.0976 E
6	NE1	55°06.082 N	012°57.470 E	20	CW1	55°02.440 N	012°49.883 E
7	E1	55°04.958 N	013°00.345 E	21	CW2	55°01.746 N	012°51.576 E
8	E2	55°03.833 N	013°03.218 E	22	CW3	54°59.774 N	012°52.0183 E
9	E3	55°02.488 N	013°05.419 E	23	CW4	54°58.496 N	012°54.686 E
10	E4	55°01.147 N	013°07.610 E	24	CE1	55°04.278 N	012°51.840 E
11	SE1	55°00.096 N	013°06.261 E	25	CE2	55°03.940 N	012°54.637 E
12	S1	54°59.017 N	013°04.878 E	26	CE3	55°02.680 N	012°55.915 E
13	S2	54°58.485 N	013°01.576 E	27	CE4	55°01.555 N	012°56.263 E
14	S3	54°58.042 N	012°54.707 E	28	CE5	55°00.506 N	012°58.918 E
				29	CE6	54°58.990 N	012°59.041 E



C-POD stations:

On the below mentioned positions Vattenfall have 5 C-POD stations deployed (KS1-KS5) marked with yellow buoys.

Station	Lat	Long
KS1	56,85243	11,93293
KS2	56,8498	12,03168
KS3	56,80908	11,94408
KS4	56,76895	12,04957
KS5	56,7102	12,03213



Store Middelgrund - MET Mast

On the position: 56°33.7N - 012°06.3E a MET mast is situated on a platform 7 m above mean sea level. The complete height of both mast and platform is approx. 120 m above mean sea level. The construction can be seen at the photo.



FOGA ApS has on basis of information received from offshore operators at the Baltic Sea prepared the following newsletter describing present activities:

Info 2.0

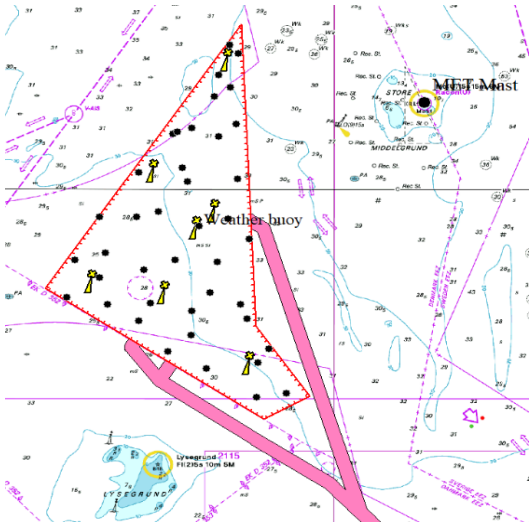


Hesselø Windfarm

Energinet are conducting various offshore surveys in Kattegat, where the Hesselø Offshore Windfarm is planned. The Hesselø Offshore Windfarm is situated in the waters North of Lysegrund, covering an area of approx. 247 km² with a planned capacity of up to 1,2 GW. It is expected that the windfarm will be commissioned in 2027. The area of the coming windfarm is within the below mentioned positions. (Datum: ETRS89, can be used as WGS84):

LATITUDE	LONGITUDE
56° 20,110' N	11° 55,130' E
56° 25,724' N	11° 39,884' E
56° 34,914' N	11° 50,963' E
56° 37,052' N	11° 53,528' E
56° 24,111' N	11° 54,539' E
56° 21,108' N	11° 58,289' E

PosName	Long_DM	Lat_DM
Hes1new	11° 52.29'	56° 35.034'
Hes2	11° 47.099'	56° 30.289'
Hes3	11° 51.359'	56° 28.574'
Hes4new	11° 42.794'	56° 25.539'
Hes5new	11° 47.851'	56° 25.070'
Hes6	11° 53.785'	56° 22.046'
Hes7	12° 14.448'	56° 08.886'
Hes8	12° 15.354'	56° 08.088'



Vessels

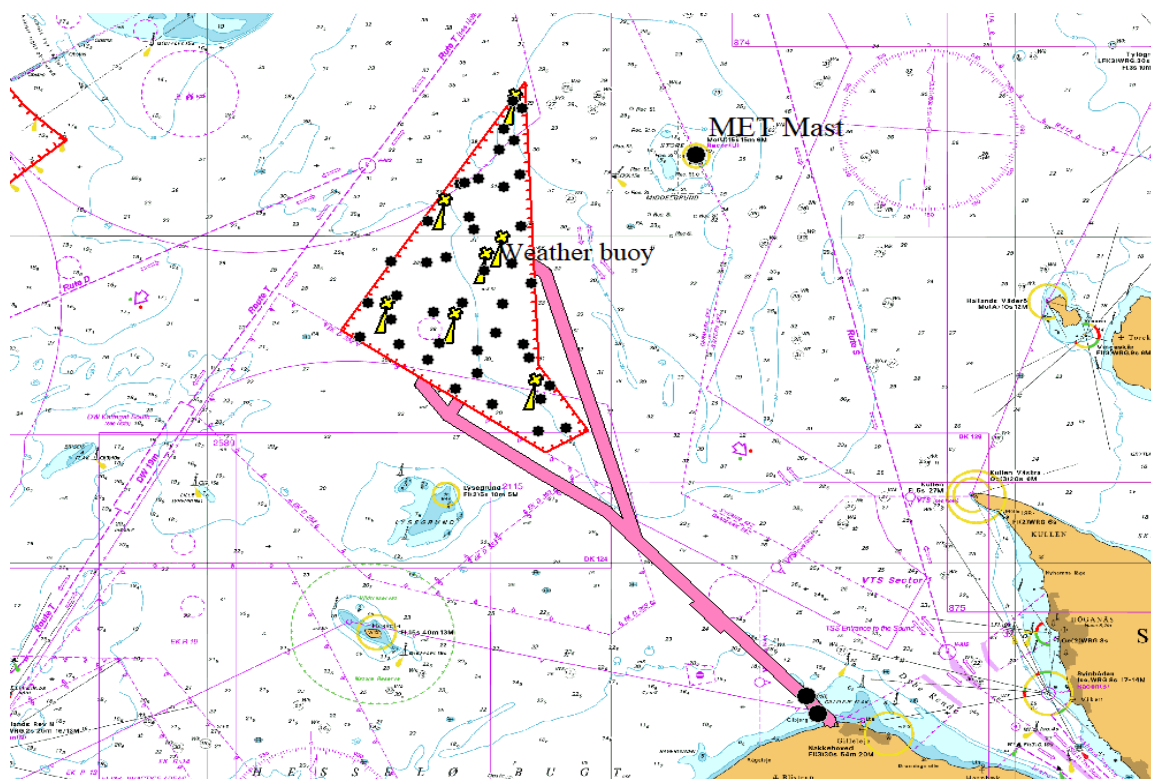
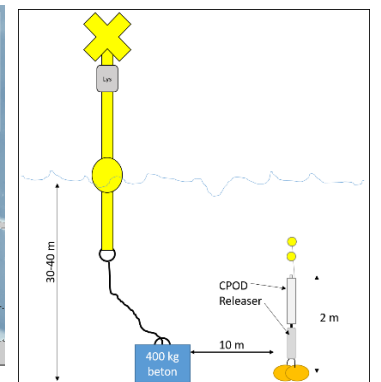
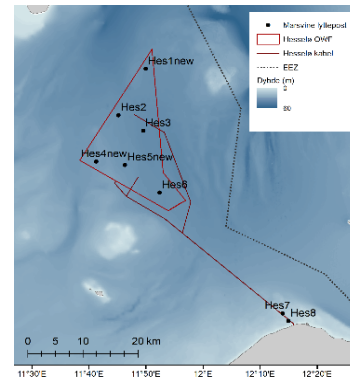
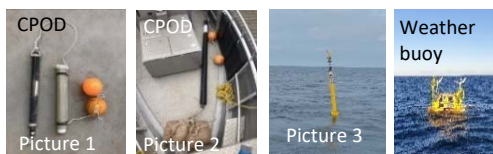
The vessel **OCEAN VANTAGE** is at the Hesselø Offshore Windfarm site conducting seabed CPT survey within the limits of the OWF site. The duration is 3 weeks, afterwards the vessel will conduct drilling operations. During the CPT works the vessel will be in position for 4 – 6 hours at a time at the various locations. During the drilling works the vessel will be in position for 2 – 3 days at a time.

CPT/drilling positions OCEAN VANTAGE

	Latitude	Longitude
CPT1	56° 21.2070' N	11° 56.6620' E
CPT2	56° 23.0143' N	11° 48.4198' E
CPT3	56° 22.2792' N	11° 51.1187' E
CPT4	56° 22.5428' N	11° 54.7077' E
CPT5	56° 25.3579' N	11° 41.3721' E
CPT6	56° 25.0225' N	11° 44.2234' E
CPT7	56° 25.0820' N	11° 47.2291' E
CPT8	56° 24.7444' N	11° 50.0827' E
CPT9	56° 25.5544' N	11° 51.3859' E
CPT10	56° 24.4242' N	11° 53.9317' E
CPT11	56° 26.9398' N	11° 41.9747' E
CPT12	56° 27.2433' N	11° 44.0824' E
CPT13	56° 26.5124' N	11° 46.7788' E
CPT14	56° 26.8722' N	11° 51.8954' E
CPT15	56° 28.8053' N	11° 43.6824' E
CPT16	56° 29.0153' N	11° 47.7478' E
CPT17	56° 28.4023' N	11° 50.5945' E
CPT18	56° 28.7170' N	11° 52.6085' E
CPT19	56° 30.6895' N	11° 46.4006' E
CPT20	56° 30.8784' N	11° 49.4631' E
CPT21	56° 30.4278' N	11° 53.2729' E
CPT22	56° 32.5926' N	11° 50.1231' E
CPT23	56° 32.2347' N	11° 51.9834' E
CPT24	56° 34.8490' N	11° 51.9913' E
CPT25	56° 34.3428' N	11° 52.7997' E
CPT26	56° 36.1376' N	11° 52.7391' E
OSS 1	56° 30.3108' N	11° 49.8177' E
OSS 2	56° 23.7121' N	11° 50.0354' E
CB4	56° 33.9307' N	11° 51.6452' E
CB5	56° 24.3486' N	11° 46.3940' E
CB6	56° 26.1889' N	11° 43.6814' E
CB7	56° 26.9469' N	11° 48.9399' E
CB8	56° 21.0384' N	11° 54.6103' E
CB9	56° 35.7911' N	11° 53.3639' E
CB10	56° 27.8489' N	11° 54.0944' E
CB11	56° 25.0274' N	11° 53.5016' E
CB12	56° 32.7785' N	11° 53.1878' E
CB13	56° 28.7810' N	11° 46.2509' E
CB14	56° 23.1410' N	11° 55.4568' E
CB3a	56° 32.4363' N	11° 49.1090' E

Energinet have deployed a weather buoy at position: 56° 27.852'N - 11° 50.104'E. Datum: ETR89.

Energinet has deployed 8 CPODS at the site where the Hesselø Offshore Windfarm is planned. 6 are positioned within the project site and 2 are positioned close to the shore side within the planned cable route. These 2 stations does not have a buoy attached. The CPOD stations will remain in position for 1 year. A safety distance of 25 meter around the position is required. There will be conducted service visits with an interval of 8 weeks. Each station consists of buoy which via chain and rope are connected to 400 kg concrete anchor. The acoustic device (called a CPOD) with its hydrostatic release is deployed approx. 10 meters from the anchor and it is kept in position via 2 20 kg sandbags. It is situated 2 meter above the seabed (3,5 m including the orange ball). The hydrostatic release can be activated from the surface, whereby the releaser as well as the CPOD are released and comes to the surface due to the 2 buoyancy balls. Below pictures shows the equipment (Picture 1 & 2) as well as the buoys (Picture 3) deployed at CPOD 1-6, no buoys are deployed at the two CPODs in the cable corridor. If the equipment by accident is caught by a fishing vessel please contact Aarhus Universitet (Jeppe Dalgaard +45 93 50 82 02 eller Signe Sveegaard +45 28 95 16 64). A small reward will be paid if the equipment is delivered back.





**FOGA ApS
FISHERMENS
INFORMATION
ON OFFSHORE
ACTIVITIES**

Trafikhavnsvej 19
DK-6700 Esbjerg
Tel.: +45 75 45 11 44
E-Mail: fish.info@foga.dk
Web page: www.foga.dk

BALTIC SEA ACTIVITIES

**Update of information
Week 17
April 29 - Maj 05, 2021
Next FOGA Info to be distributed Maj 06, 2021**

FOGA ApS has on basis of information received from offshore operators at the Baltic Sea prepared the following newsletter describing present activities:

Info 3.0

Vessel positions:

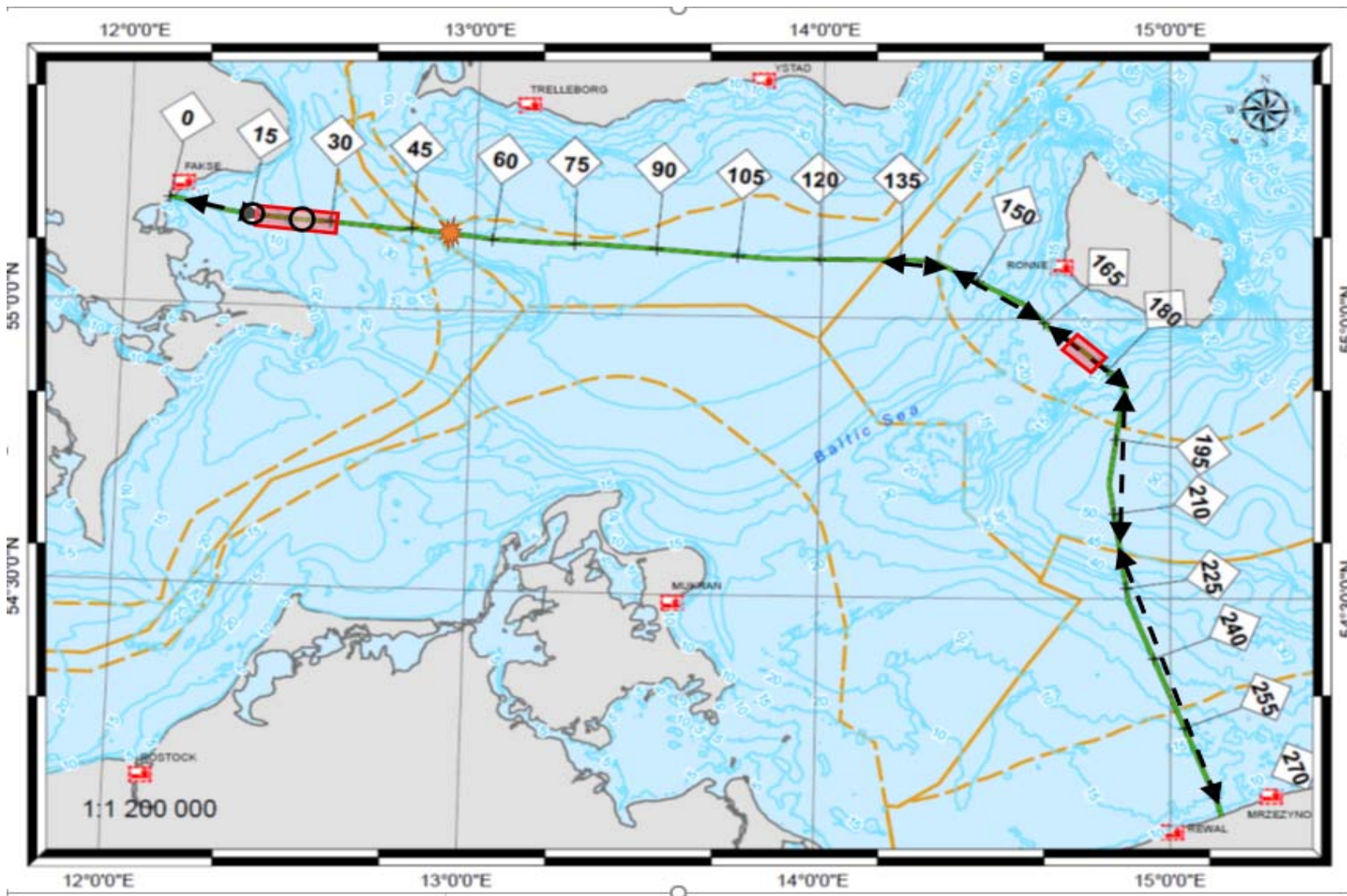
The vessel **ARNE TISELIUS** conducting environmental survey in the Baltic Sea.



Info 4.0 Baltic Pipe construction



GAZ-SYSTEM are constructing the Baltic Pipe subsea gas pipeline connecting Poland and Denmark through the Baltic Sea. In the next 7-day period, survey activities are planned in the areas marked with arrows, construction (boulder removal and pre-lay dredging) is planned in the areas marked red. Monitoring buoys are marked with black circles. Operations may also be conducted at other locations in the event of unexpected schedule changes. Any navigation, diving, anchoring, fishery and work on the seabed within the survey and construction zones is strongly discouraged, as it may cause serious risks to the safety at sea. All survey and construction fleet vessels will be transmitting data via AIS and



Survey

The following survey vessels are performing survey activities of the pipeline anchor corridor ($\pm 1000\text{m}$ off the route):

1. **TSM OUESSANT**: between KP 1 and KP 18, and between KP 271 and 273
2. **NG WORKER**: between KP 132 and KP 272
3. **SKJOLD R**: between KP 174 and 178, and between KP 18 and 25

UXO clearance

The UXO clearance vessel **NOORDHOEK PATHFINDER**, assisted by bubble curtain vessel **NOORTRUCK**, shall perform UXO clearance operation at KP 52,5, marked by the orange explosion sign on the map above. A safety zone of 1500m shall be maintained around the vessels. Any presence within or close to safety zone is strongly discouraged due to obvious grave risks to safety at sea.

Coordinates (pipeline route only)

	Start		End	
	Latitude	Longitude	Latitude	Longitude
TSM Ouessant	55° 11.220 N	12° 8.124 E	55° 9.604 N	12° 23.826 E
NG Worker	54° 7.895 N	15° 8.191 E	54° 6.952 N	15° 8.583 E
Skjold R	55° 6.322 N	14° 10.925 E	54° 7.895 N	15° 8.191 E
Noordhoek Pathfinder	54° 56.659 N	14° 45.051 E	54° 55.175 N	14° 48.022 E
Noortruck	55° 11.220 N	12° 8.124 E	55° 9.311 N	12° 30.301 E
Noortruck	55° 8.260 N	12° 56.263 E		



FOGA ApS
FISHERMENS
INFORMATION
ON OFFSHORE
ACTIVITIES

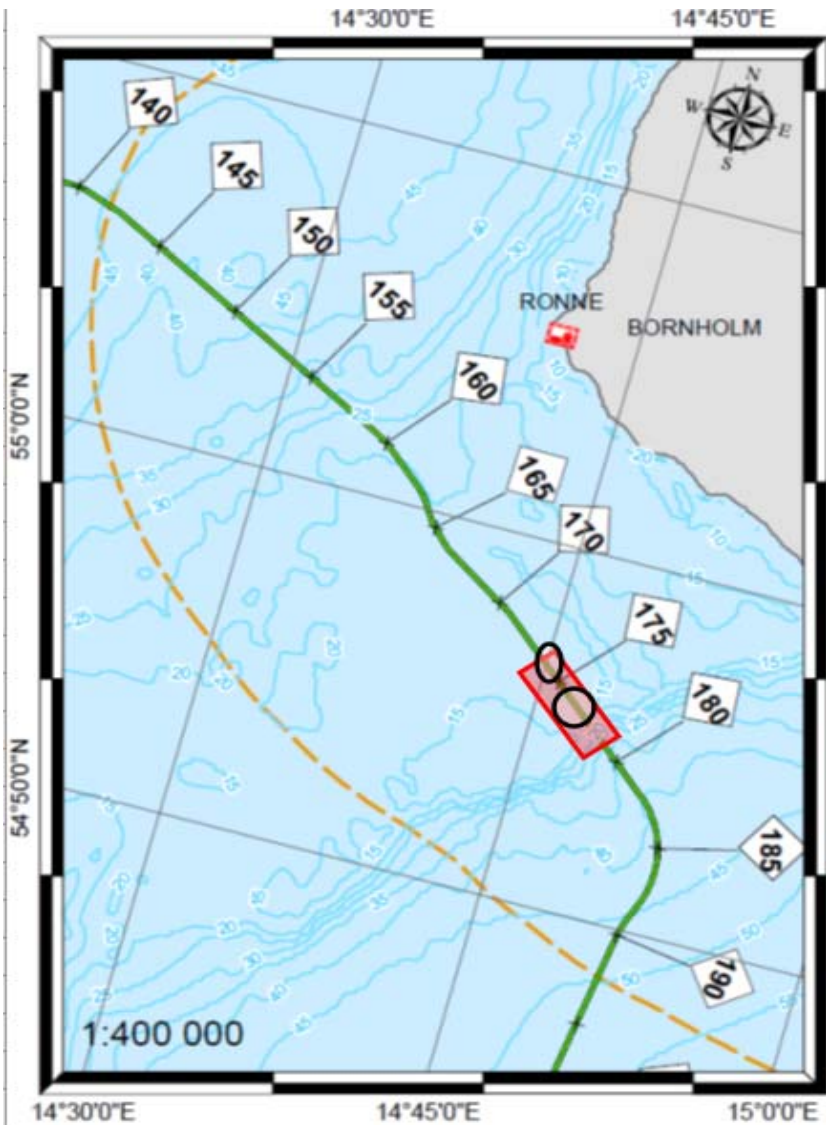
Trafikhavnsvej 19
 DK-6700 Esbjerg
 Tel.: +45 75 45 11 44
 E-Mail: fish.info@foga.dk
 Web page: www.foga.dk

BALTIC SEA ACTIVITIES

Update of information
Week 17
April 29 - Maj 05, 2021
 Next FOGA Info to be distributed Maj 06, 2021

FOGA ApS has on basis of information received from offshore operators at the Baltic Sea prepared the following newsletter describing present activities:

Info 4.1 Bornholm



The backhoe dredger **MJOLLNER R**, assisted by the tug **RIMFAXE R**, is conducting pre-lay dredging operations between KP 174 and 179. A safety zone of 500m shall be maintained around the vessels (area marked red) due to their limited manoeuvrability. Monitoring buoys have been deployed at KP 174 and KP 176,5.

Any navigation, diving, anchoring, fishery and work on the seabed within the construction/safety zone, or in the vicinity of monitoring buoys, is strongly discouraged, as it may cause serious risks to the safety at sea and/or damage to the project equipment. Vessels will be transmitting data via AIS and listening on VHF Ch. 16.



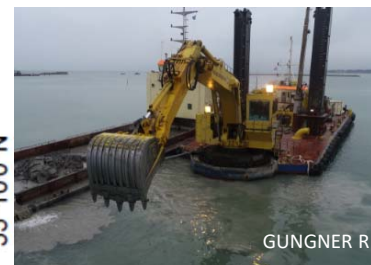
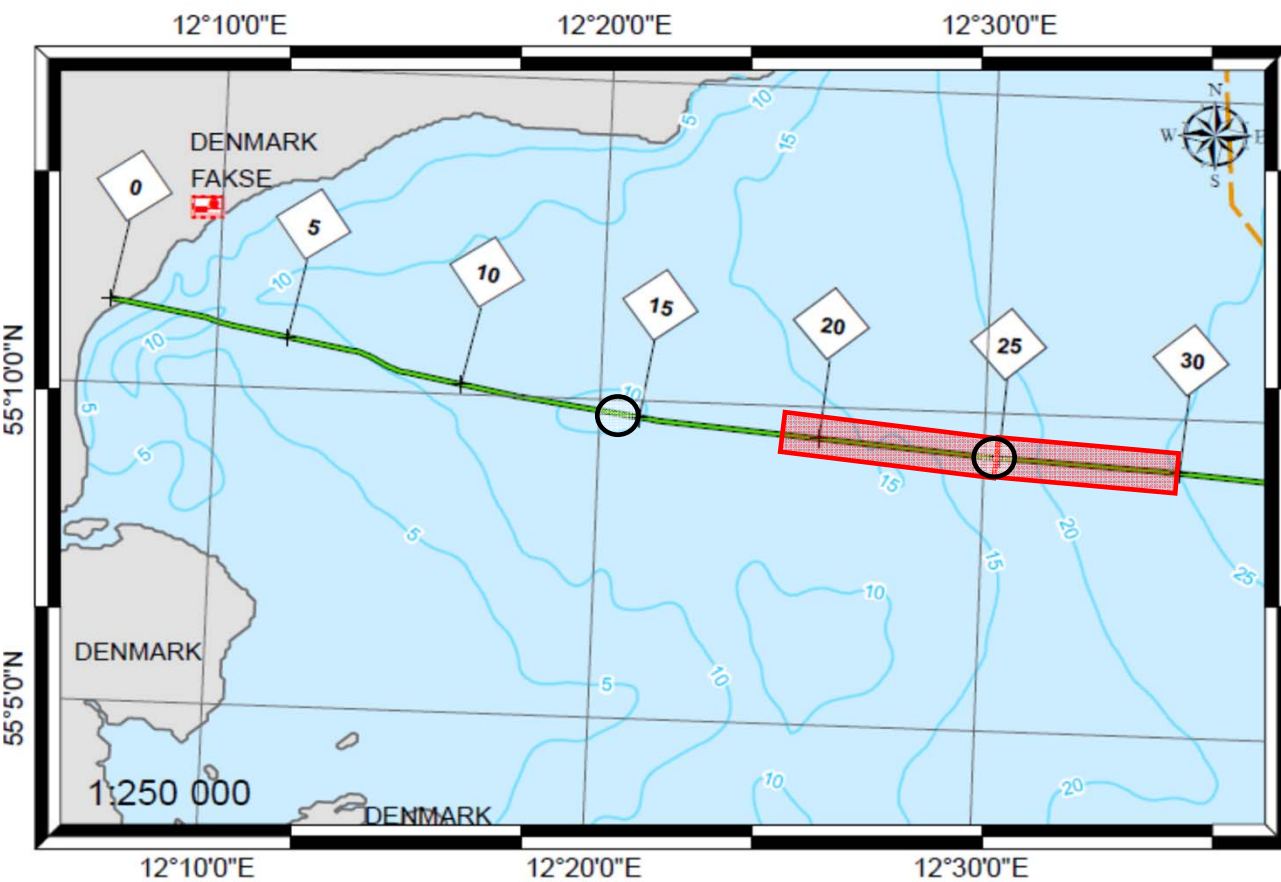
Coordinates (pipeline route only)

	Start		End	
	Latitude	Longitude	Latitude	Longitude
MJOLLNER R	54° 56.659 N	14° 45.051 E	54° 55.175 N	14° 48.022 E
RIMFAXE R	54° 56.659 N	14° 45.051 E	54° 55.175 N	14° 48.022 E
Monitoring buoy 1	54° 55.770 N	14° 47.010 E		
Monitoring buoy 2	54° 56.660 N	14° 45.050 E		



**Co-financed by the Connecting Europe
 Facility of the European Union**

Info 4.2 Denmark nearshore



The vessel **GRANE R** is conducting boulder removal operations between KP 24 and 30. The backhoe dredgers **GUNGNER R** and **HARALD**, assisted by the tugs **SKINFAXE R** and **LEONARDO**, are conducting pre-lay dredging operations between KP 19 and 25. Monitoring buoys have been deployed at KP 14 and KP 25. A safety zone of 500m shall be maintained around the vessels (area marked red) due to their limited manoeuvrability. Any navigation, diving, anchoring, fishery and work on the seabed within the construction zone or in the vicinity of monitoring buoys is strongly discouraged, as it may cause serious risks to the safety at sea and/or result in damage to project equipment. Vessels will be transmitting data via AIS and listening on VHF Ch. 16.

	Start		End	
	Latitude	Longitude	Latitude	Longitude
Gungner R	55°9.538 N	12°25.233 E	55°9.311 N	12° 30.301 E
Skinfaxe R	55°9.538 N	12°25.233 E	55°9.311 N	12° 30.301 E
Harald	55°9.538 N	12°25.233 E	55°9.311 N	12° 30.301 E
Leonardo	55°9.538 N	12°25.233 E	55°9.311 N	12° 30.301 E
Monitoring buoy 1	55°9.790 N	12°20.500 E		
Monitoring buoy 2	55°9.330 N	12°29.700 E		

This newsletter and infochart has been prepared on request from the operators in the Baltic Sea/Inner Danish waters and is distributed via E-mail to all fishing vessels and interested parties around the Baltic Sea. Please also visit FOGA's website www.foga.dk. E-mail fish.info@foga.dk to subscribe or unsubscribe. Please also notice that the size of the newsletter as a pdf file is approx. 1 mb.