

## Notification to Fishermen

### Nord Stream 2 Project

03.01.2019

#### 1. Purpose of this notification

Nord Stream 2 AG hereby submits a notification for the activities to be performed for the Nord Stream 2 Project in January 2019.

During this period, rock placement and pipelay are planned in the Finnish Exclusive Economic Zone (EEZ). Pipelay will also continue in the Swedish EEZ, and rock placement activity of short duration (one or two days) may be carried out in Sweden.

Nord Stream 2 AG reminds that the construction vessels have limited manoeuvrability while performing their work and that safety exclusion zones are therefore established around the vessels carrying out the Nord Stream 2 activities.

#### 2. Vessel information

##### Planned Vessels

##### Pipelay in Finland:

*Pioneering Spirit – Call sign: 9HA4112*



**Pioneering Spirit Survey support:**

*Oceanic* – Call sign: 9HA4426



**Other supporting vessels to Pioneering Spirit:**

Pipe Carriers:

*Solvik Supplier*, C6ZW5

*Havila Crusader*, LCAH3

*Symphony Performer*, PCVX

*Sea Supra*, LAEW8

*Standard Supplier*, MBFI6

Supply Ship:

*Havila Fortress*, C6NX9

**Pipelay in Sweden:**

*Solitaire* – Call sign: 9HA4114



**Solitaire Survey support:**

*Fortitude* – Call sign: 9HA4717



**Other supporting vessels to Solitaire:**

Pipe Carriers:

*Symphony Provider*, PCVX

*Standard Provider*, MCES9

*Standard Supporter*, MCEH2

*Standard Princess*, MAQY2

*Standard Supplier*, MBFI6

*Normand Naley*, call sign LCOS

General support vessel:

*Felicity*, LNMG3

*Alegria*, LAFU8

**Rock placement in Finland (and possibly Sweden):**

*Nordnes* – Call sign: PHOG



**3. Duration and locations of activities**

In January, **rock placement** activities with *Nordnes* will continue in the Finnish jurisdiction. In addition, rock placement activity of short duration may be carried out in Sweden.

**Pipelay** with *Pioneering Spirit* will be implemented in January in the Finnish EEZ, with pipe supply to be carried out from Koverhar. The laying direction is from east to west, towards Sweden.

*Solitaire* will lay pipeline in the Swedish EEZ, with the laying direction from south to north, towards Finland. The pipe supply vessels will shuttle from the pipe logistics bases (Karlshamn and Koverhar) to the pipelay vessel.

Please note that these details are subject to change for operational reasons.

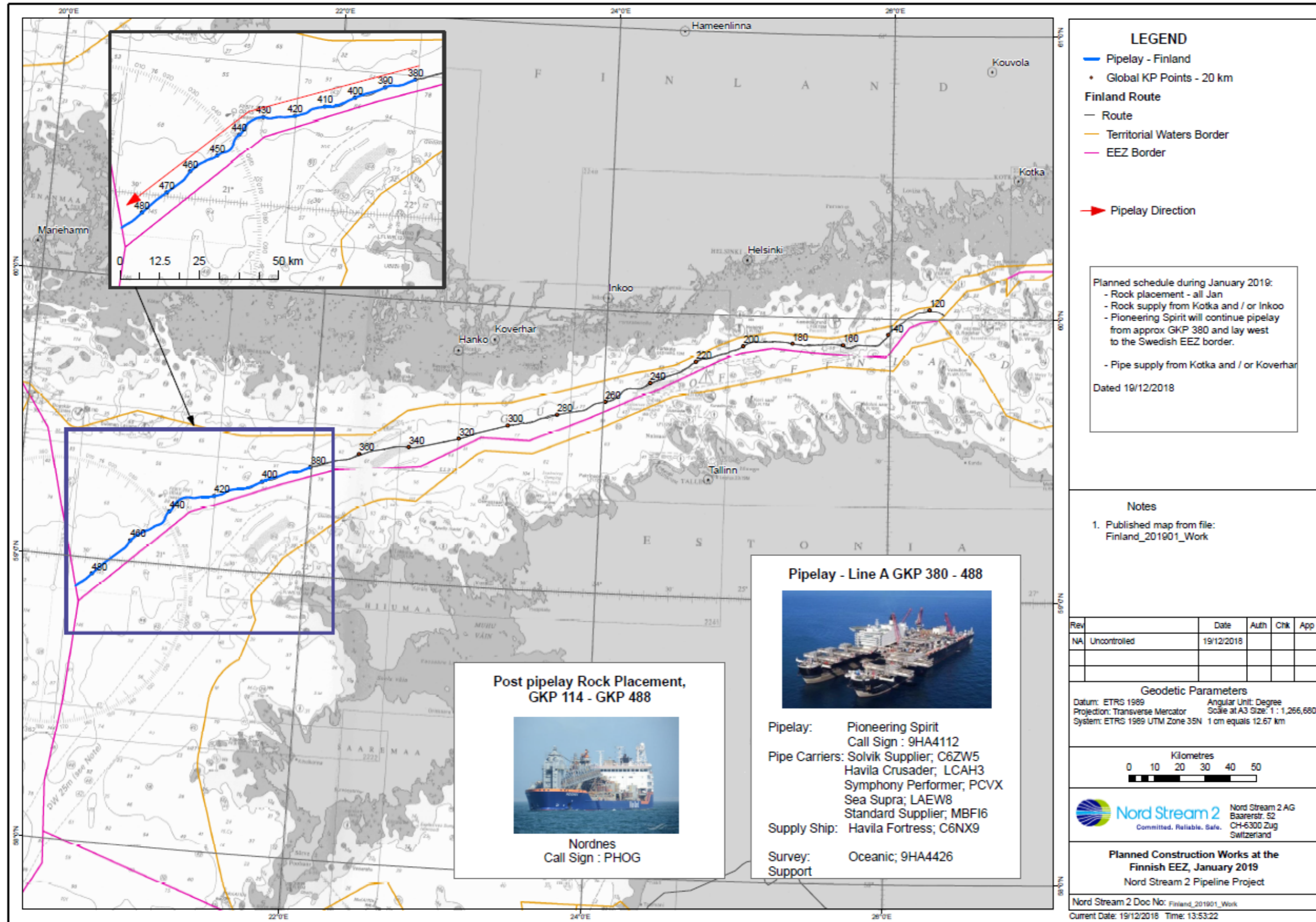


Figure 1: Nord Stream 2 activities in January in the Finnish EEZ

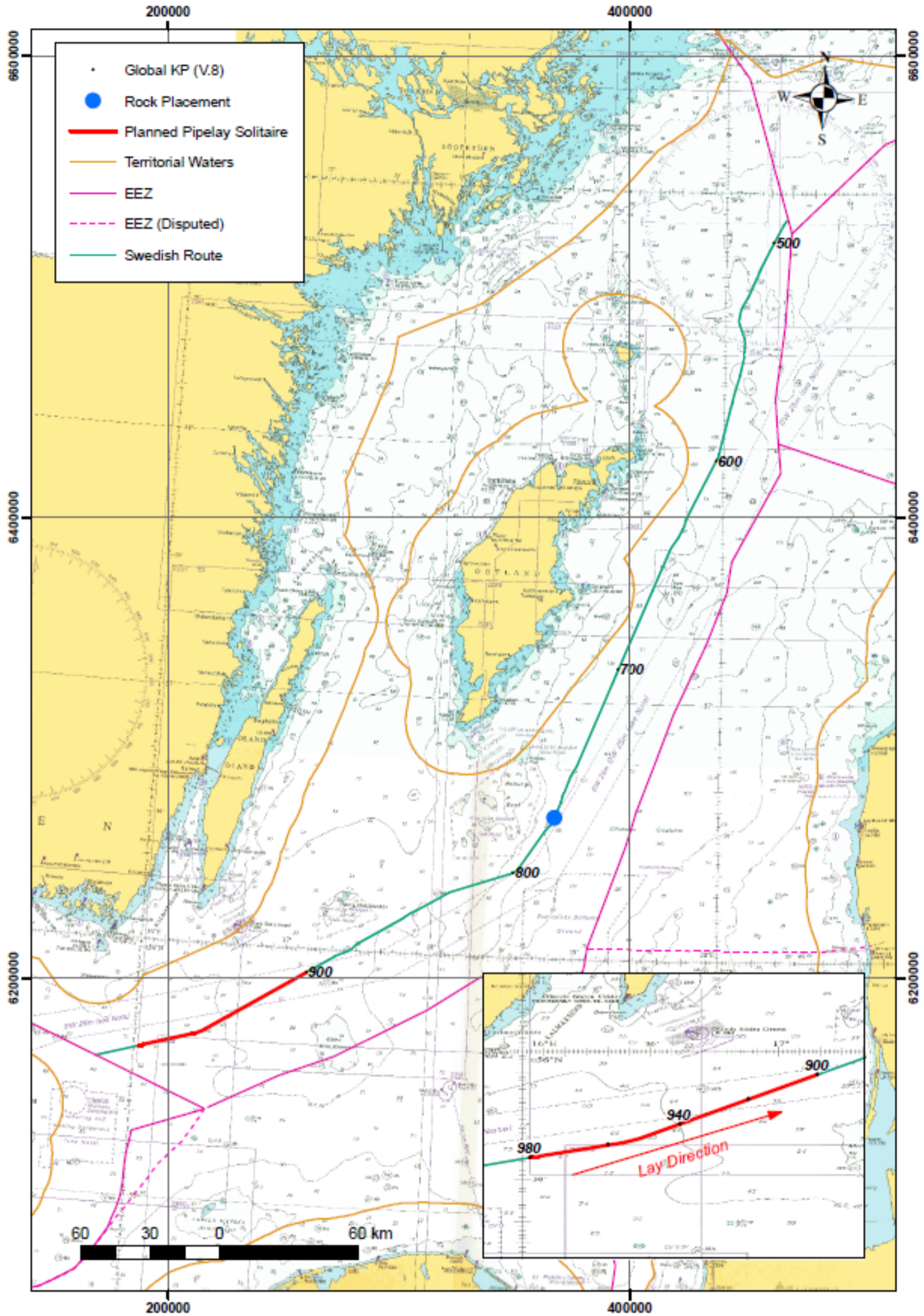
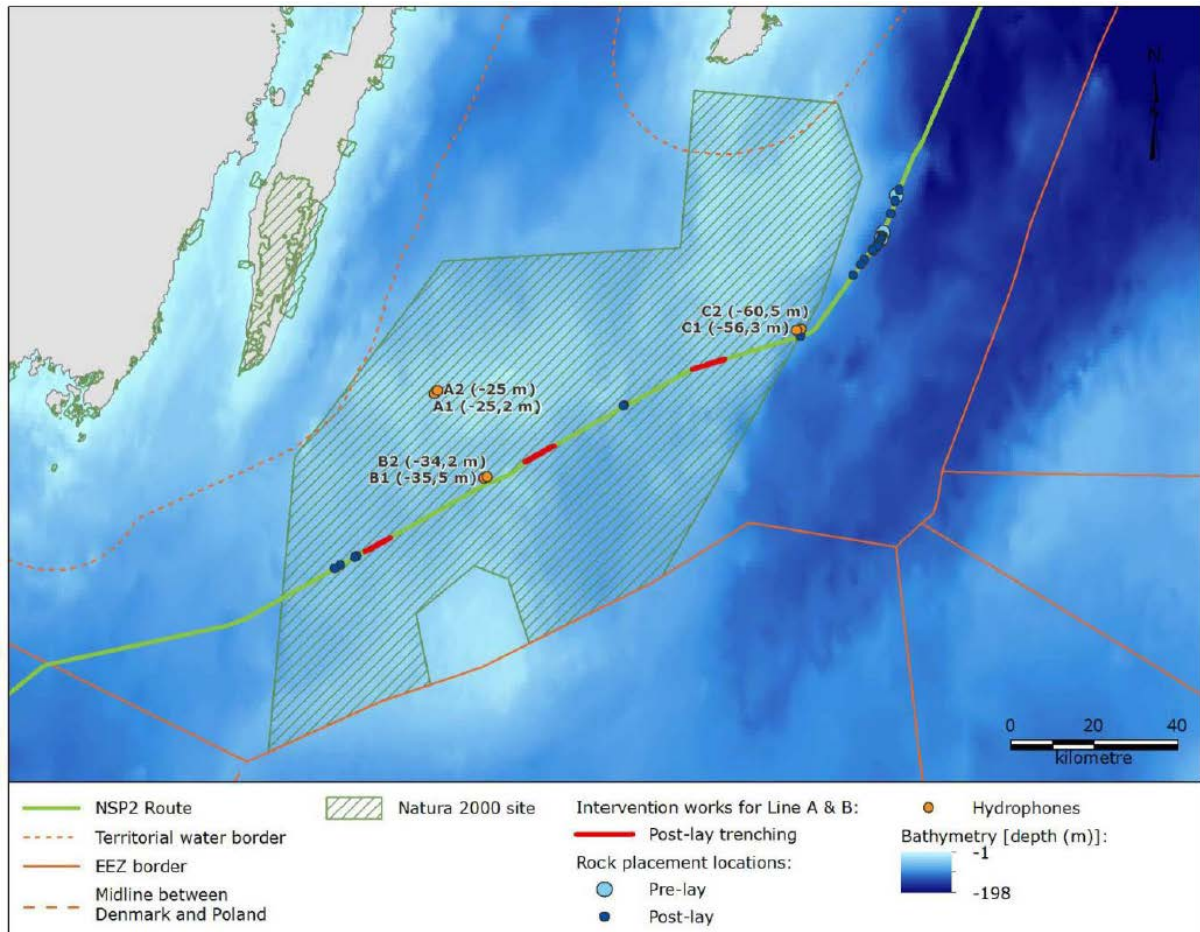


Figure 2: Nord Stream 2 activities in January in the Swedish EEZ

#### 4. Monitoring activities in Swedish waters

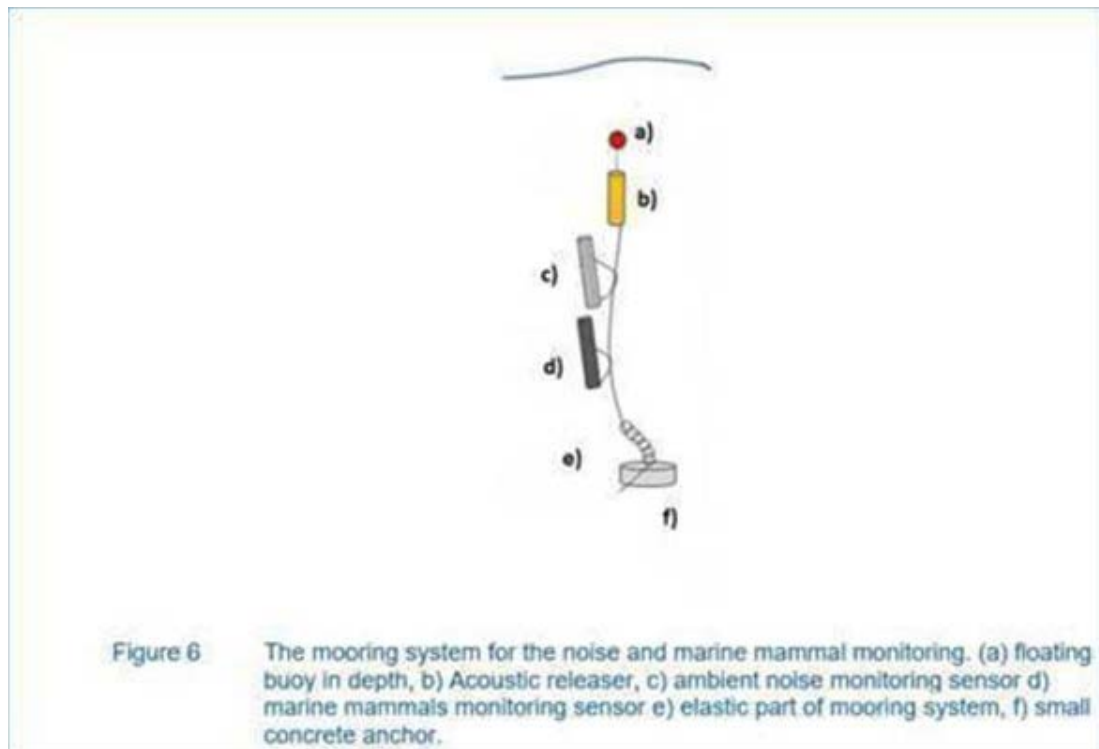
Stationary hydrophones to measure underwater noise will be placed on the seabed at a few locations within the Natura 2000 area *Hoburgs bank och Midsjöbankarna* in Swedish waters (see orange circles in the attached map with approximate coordinates below) as of mid-January (actual coordinates will be provided in the next notification, end January).



Rig ID	Latitude	Longitude
A1	56,1659	17,1364
A2	56,1722	17,1497
A3	56,15979	17,14779
B1	55,97857	17,34121
B2	55,98363	17,35594
B3	55,99169	17,3531
C1	56,32895	18,53138
C2	56,32634	18,51723
C3	56,33748	18,52928

The underwater noise measurements are done due to a direct request from the Swedish authorities as part of Nord Stream 2's obligatory environmental monitoring program. The hydrophone rigs are up to 3 m in height above the seabed and are expected to be in location until May 2019. In order to safeguard the rigs and to avoid the risk of damage to nets and other fishery equipment, fishermen

are advised to avoid near-bottom trawling at the below mentioned locations. The image below illustrates how a rig looks like:



## 5. Exclusion Zones

Nord Stream 2 AG would like to highlight that a safety zone of 1 nautical mile is established around the pipelaying vessels *Solitaire* and *Pioneering Spirit*, and 500 meters around the other vessels performing activities for Nord Stream 2 Project.

Information about the works to be performed in the upcoming weeks, can also be found on the Notices to Mariners web-page, available at:

<https://www.liikennevirasto.fi/ammattimerenkulku/merikartat/merikarttojen-paivytyspalvelu/tiedonantoja-merenkulkijoille-vuodesta-2005/2018#.W7HcLiB9jb0><sup>1</sup>

and

<http://www.sjofartsverket.se/sv/Sjofart/Sjokort/Ufs---Underrattelser-for-sjofarande-/Sok-i-databasen11/>

In addition to this information regarding January activities, further notification(s) will follow in due course with regards to Nord Stream 2 construction activities in the coming months.

---

<sup>1</sup> If you have issues with accessing this link, please copy and paste it into browser.