

Notification to Fishermen

Nord Stream 2 Project

01.04.2019

1. Purpose of this notification

Nord Stream 2 AG hereby submits a notification for the activities to be performed for the Nord Stream 2 Project in April 2019.

During this period, rock placement of short duration is planned in the Finnish and the Swedish Exclusive Economic Zones (EEZ). Pipelay will continue in the Swedish EEZ with two lay barges – *Pioneering Spirit* and *Solitaire*. In April, pipelay may also potentially resume in the Finnish EEZ close to the Finnish-Russian border.

Nord Stream 2 AG reminds that the construction vessels have limited manoeuvrability while performing their work and that safety exclusion zones are therefore established around the vessels carrying out the Nord Stream 2 activities.

2. Planned Vessels

Pipelay in Sweden

Solitaire – Call sign: 9HA4114



Solitaire Survey support

Oceanic – Call sign: 9HA4426



or *Calamity Jane* – Call sign: 9HA4124



Other supporting vessels to Solitaire

Pipe Carriers and Support Vessels:

Symphony Performer, PBRD

NAO Storm, LLCK

Standard Princess, MAQY2

Solvik Supplier, C6ZW5

Alegria, LAFU8

Sayan Princess, 9HA3059

Kongsborg, OZ2145

Felicity, LNMG3

Pioneering Spirit – Call sign: 9HA4112



Pioneering Spirit Survey support

Fortitude – Call sign: 9HA4717



Other supporting vessels to Pioneering Spirit

Pipe Carriers and Support Vessels:

Symphony Provider, PCVX

Normand Naley, LCOS

Havila Crusader, LCAH3

Havila Fortress, C6NX9

Sea Supra, LAEW8

Standard Supplier, MBFI6

Far Solitaire, LDYF

Havila Aurora, C6XU4

Rock placement in Finland and Sweden:

Bravenes – Call sign: PDCF



3. Duration and locations of activities

In April, **rock placement** activities of short duration will be carried out with *Bravenes* in the Finnish and Swedish EEZ.

Solitaire will continue the **pipelay** of Nord Stream 2 Line B in the Swedish EEZ, with the laying direction from south to north, towards Finland. *Pioneering Spirit* will also perform the lay of the Line A in the Swedish jurisdiction, from north to south. The pipe supply vessels will shuttle from the pipe logistics bases (Karlshamn and Koverhar) to the pipelay vessels.

The maps below illustrate the April activities. Please note that these details are subject to change for operational reasons.

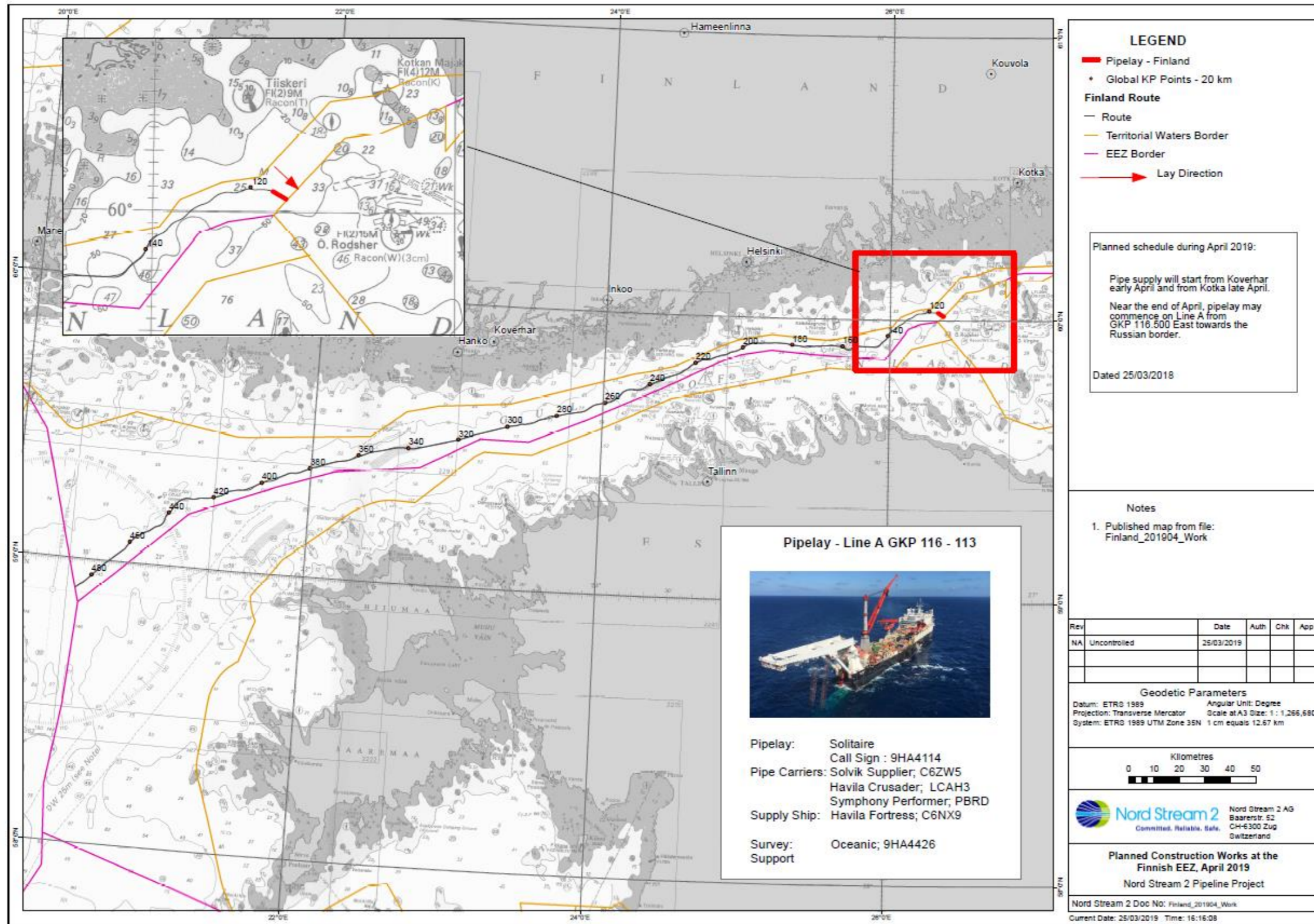


Figure 1: Nord Stream 2 construction activities in April in the Finnish EEZ – potential pipelay at the end of the month

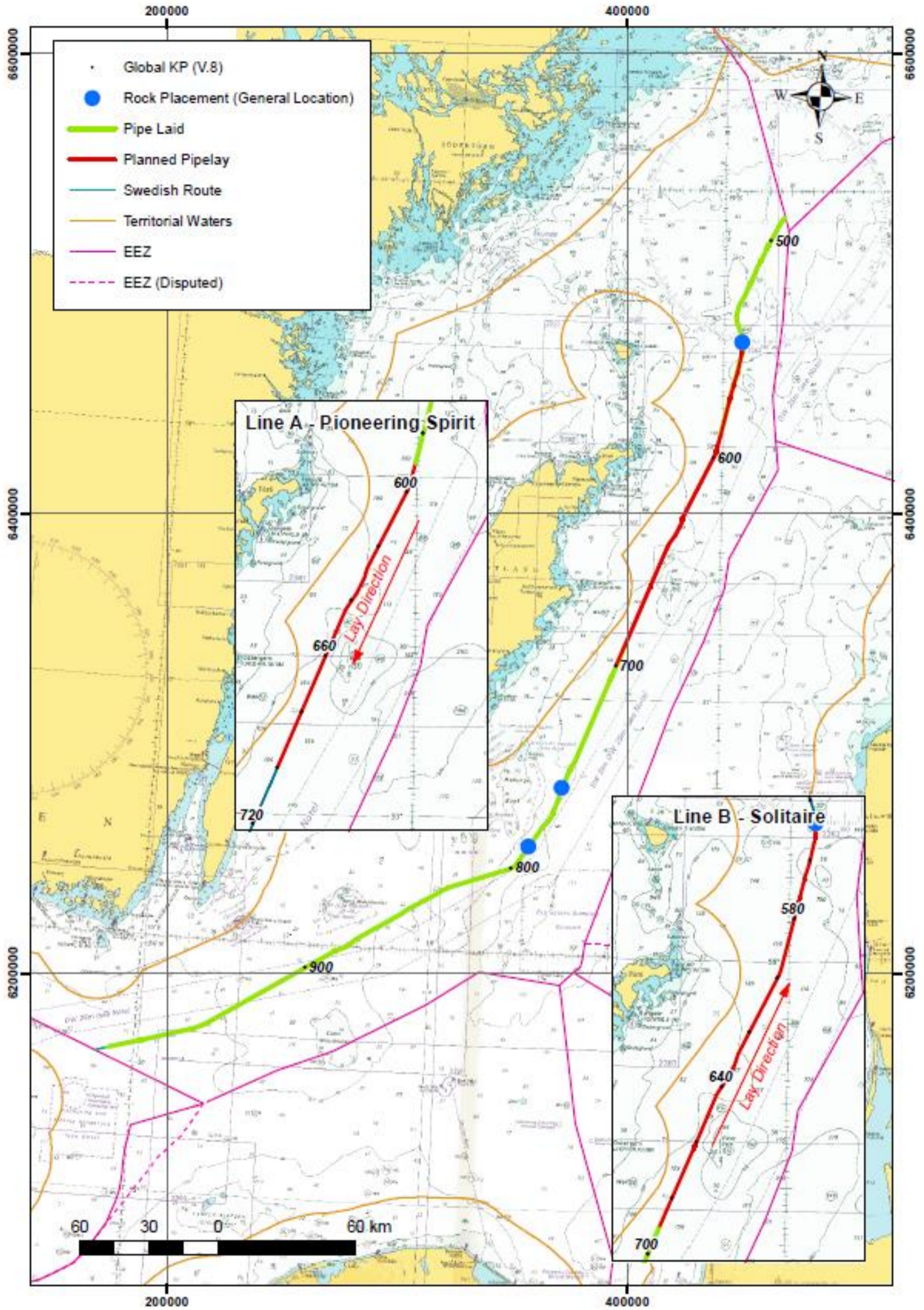
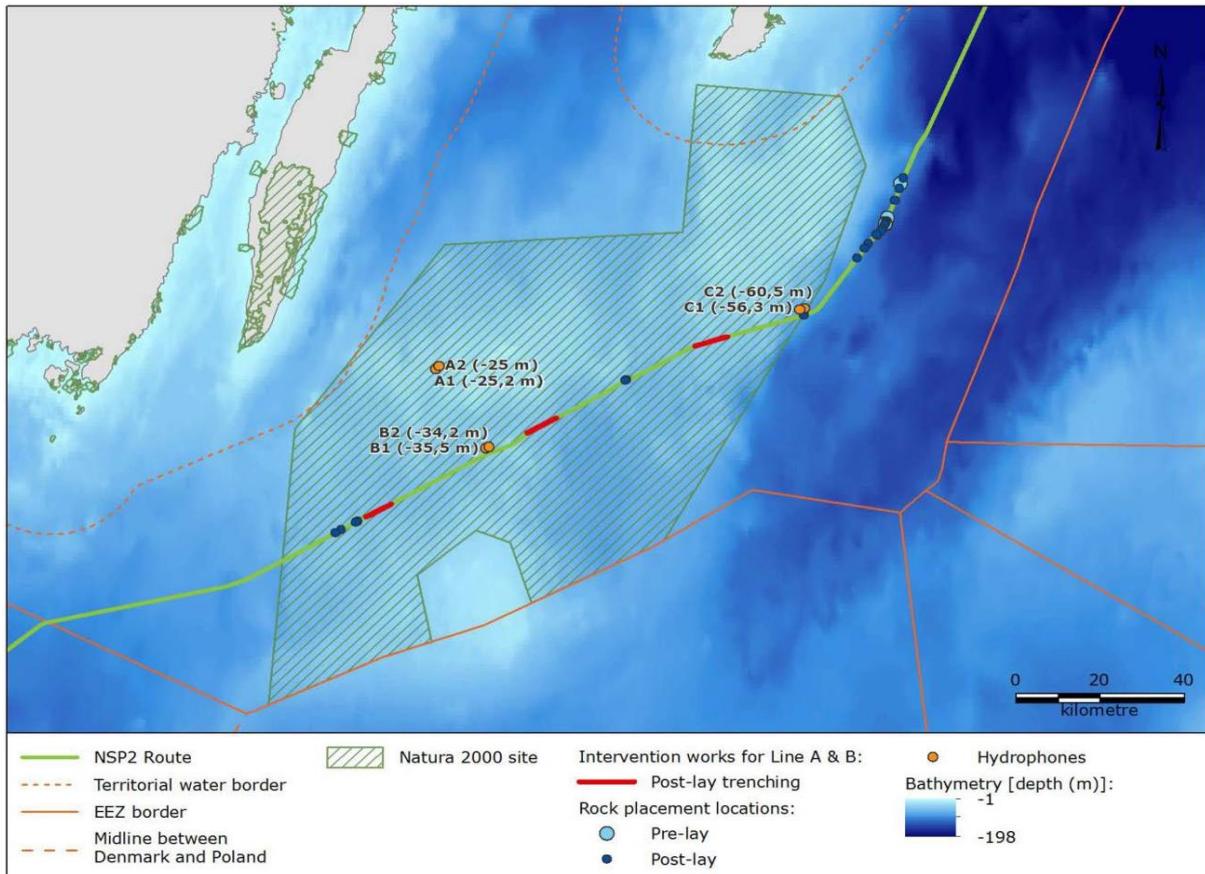


Figure 2: Nord Stream 2 construction activities in April in the Swedish EEZ

4. Monitoring activities in Swedish waters

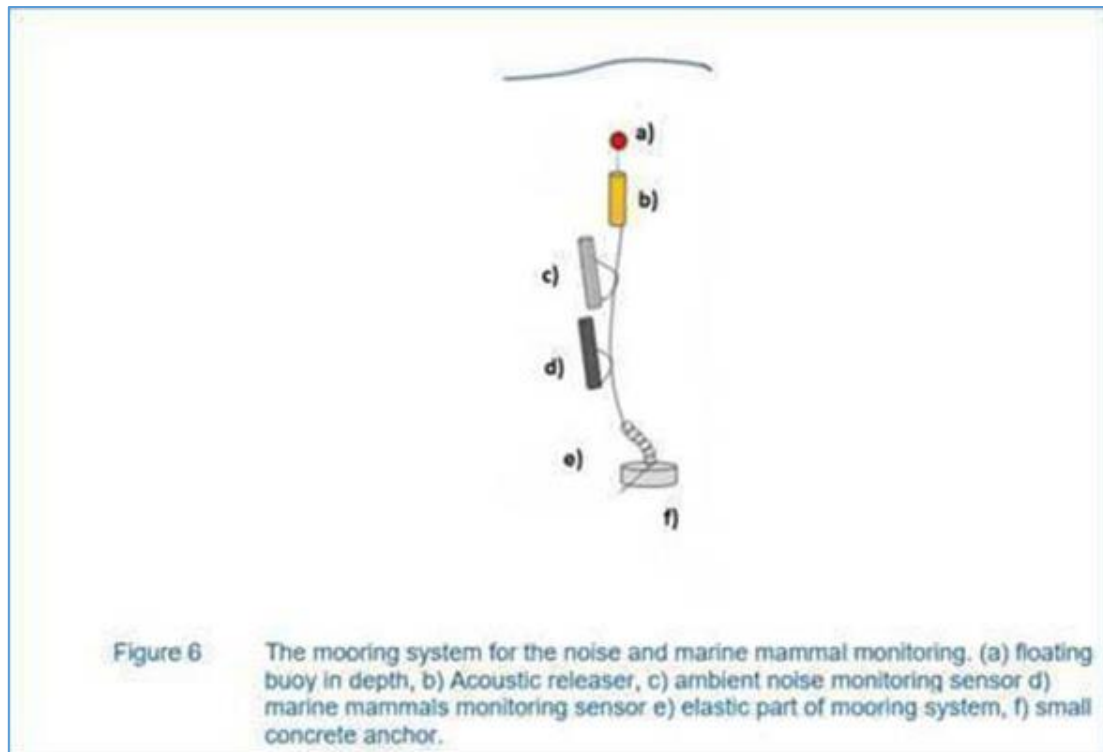
Stationary hydrophones to measure underwater noise have been placed on the seabed at a few locations within the Natura 2000 area *Hoburgs bank och Midsjöbankarna* in Swedish waters (see orange circles in the below map).



Positions of the installed rigs:

Rig ID	Latitude	Longitude
A1	56,1659	17,1364
A2	56,1722	17,1497
A3	56,15979	17,14779
B1	55.9785	17.3412
B2	55.9836	17.3559
B3	55.9919	17.3530
C1	56,32895	18,53138
C2	56,32634	18,51723
C3	56,33748	18,52928

The underwater noise measurements are done due to a direct request from the Swedish authorities as part of Nord Stream 2's obligatory environmental monitoring program. The hydrophone rigs are up to 3 m in height above the seabed and are expected to be in location until May 2019. In order to safeguard the rigs and to avoid the risk of damage to nets and other fishery equipment, fishermen are advised to avoid near-bottom trawling at the below mentioned locations. The image below illustrates how a rig looks like:



5. Exclusion Zones

Nord Stream 2 AG would like to highlight that a safety zone of 1 nautical mile is established around the pipelaying vessels *Solitaire* and *Pioneering Spirit*, and 500 meters around the other vessels performing activities for Nord Stream 2 Project.

Information about the works to be performed in the upcoming weeks, can also be found on the Notices to Mariners web-page, available at:

<https://www.liikennevirasto.fi/ammattimerenkulku/merikartat/merikarttojen-paivytyspalvelu/tiedonantoja-merenkulkijoille-vuodesta-2005/2018#.W7HcLiB9jb0>¹

and

<http://www.sjofartsverket.se/sv/Sjofart/Sjokort/Ufs---Underrattelser-for-sjofarande-/Sok-i-databasen11/>

In addition to this information regarding April activities, further notification(s) will follow in due course with regards to Nord Stream 2 construction activities in the coming months.

¹ If you have issues with accessing this link, please copy and paste it into browser.