

Notification to Fishermen

Nord Stream 2 Project

28.02.2019

1. Purpose of this notification

Nord Stream 2 AG hereby submits a notification for the activities to be performed for the Nord Stream 2 Project in March 2019.

During this period, rock placement is planned in the Finnish and the Swedish Exclusive Economic Zones (EEZ). Pipelay will continue in the Swedish EEZ.

Nord Stream 2 AG reminds that the construction vessels have limited manoeuvrability while performing their work and that safety exclusion zones are therefore established around the vessels carrying out the Nord Stream 2 activities.

2. Vessel information

Planned Vessels

Pipelay in Sweden

Solitaire – Call sign: 9HA4114



Solitaire Survey support:

Fortitude – Call sign: 9HA4717



or *Oceanic* – Call sign: 9HA4426



Other supporting vessels to Solitaire:

Pipe Carriers:

Symphony Provider, PCVX

Standard Provider, MCES9

Normand Naley, LCOS

Far Solitaire, LDYF

Supply ship:

Alegria, LAFU8

Rock placement in Finland and Sweden:

Bravenes – Call sign: PDCF



3. Duration and locations of activities

In March, **rock placement** activities of short duration will be carried out with *Bravenes* in the Finnish and Swedish jurisdictions.

Solitaire will continue the **pipelay** in the Swedish EEZ, with the laying direction from south to north, towards Finland. The pipe supply vessels will shuttle from the pipe logistics base (Karlshamn) to the pipelay vessel.

The maps below illustrate the March activities. Please note that these details are subject to change for operational reasons.

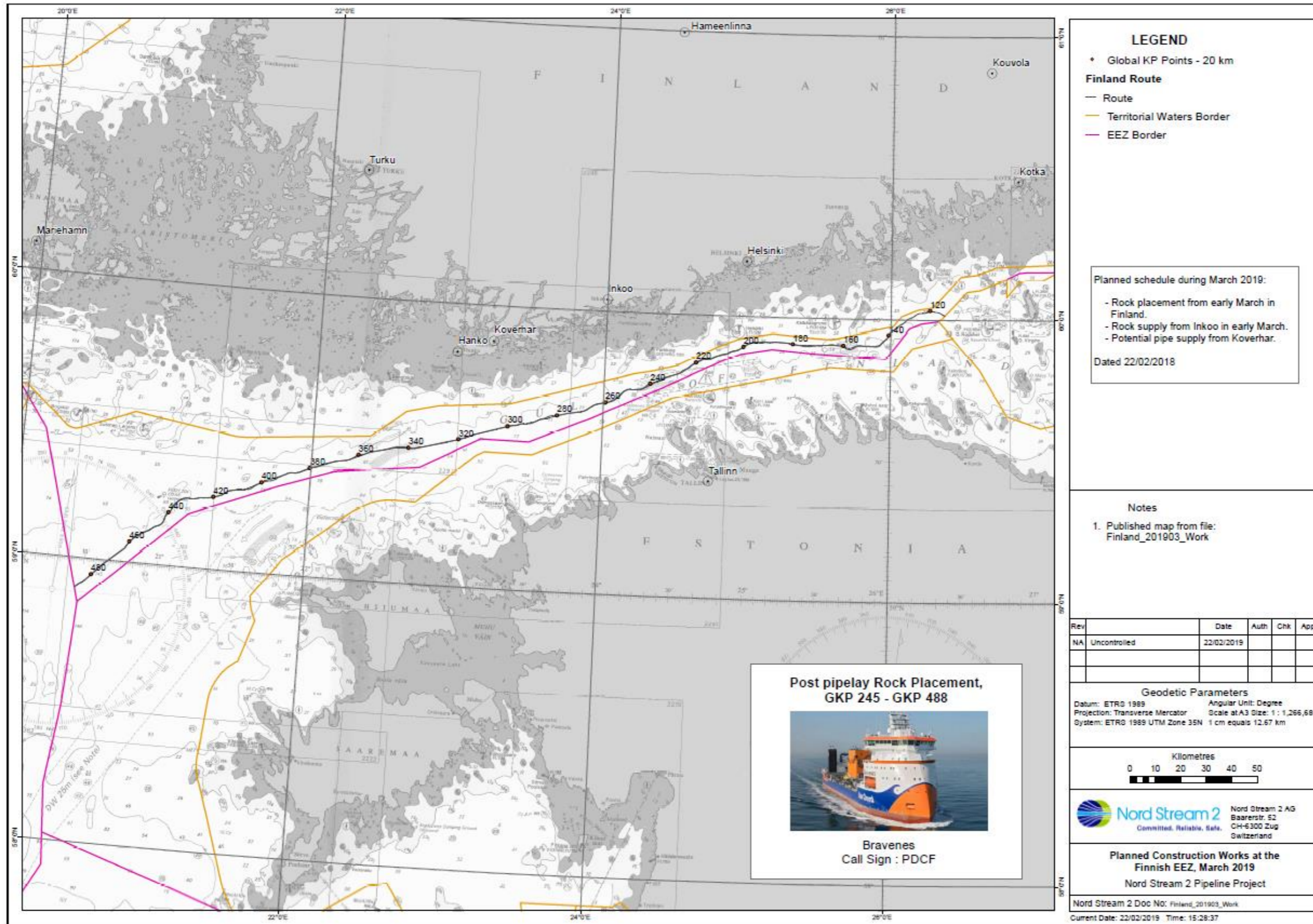


Figure 1: Nord Stream 2 construction activities in March in the Finnish EEZ – rock placement only

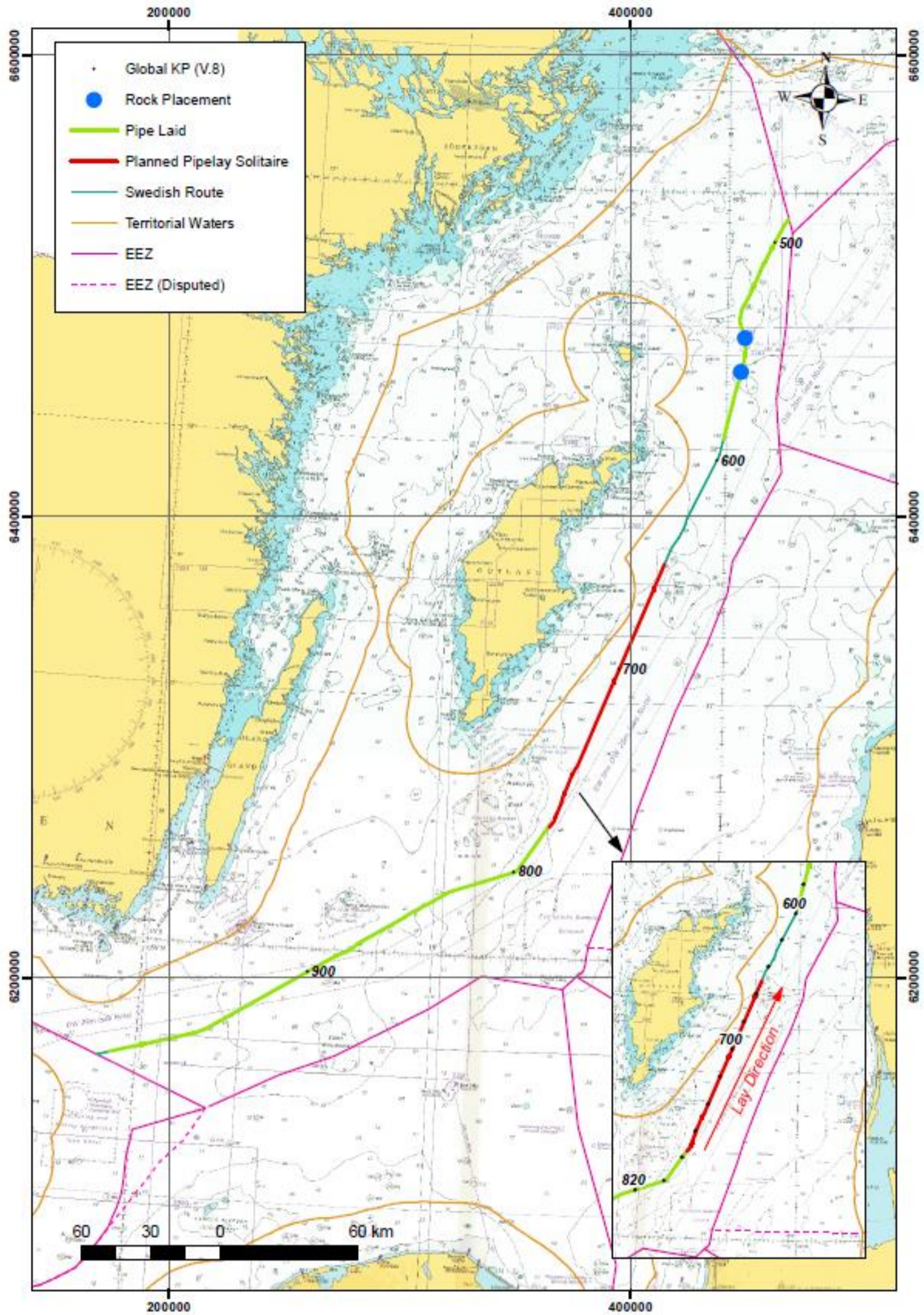
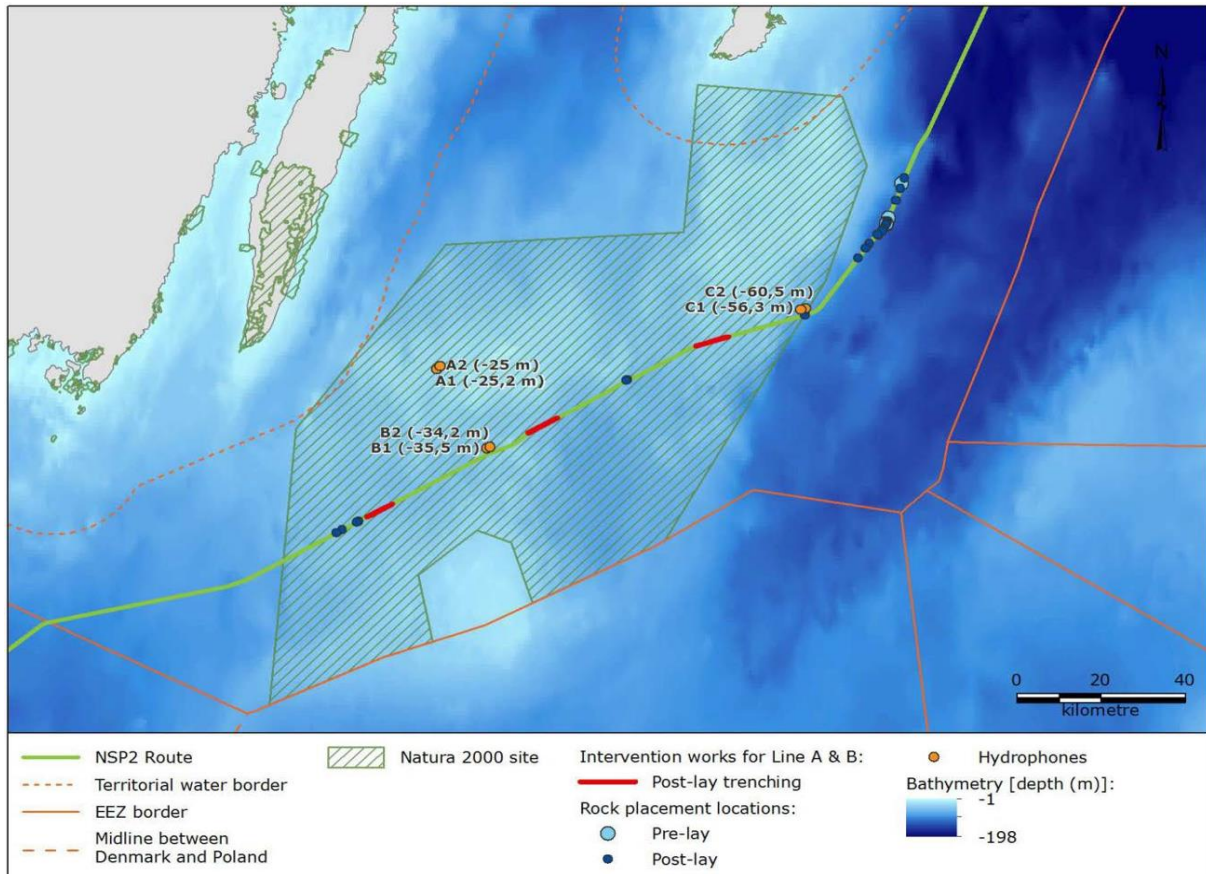


Figure 2: Nord Stream 2 construction activities in March in the Swedish EEZ

4. Monitoring activities in Swedish waters

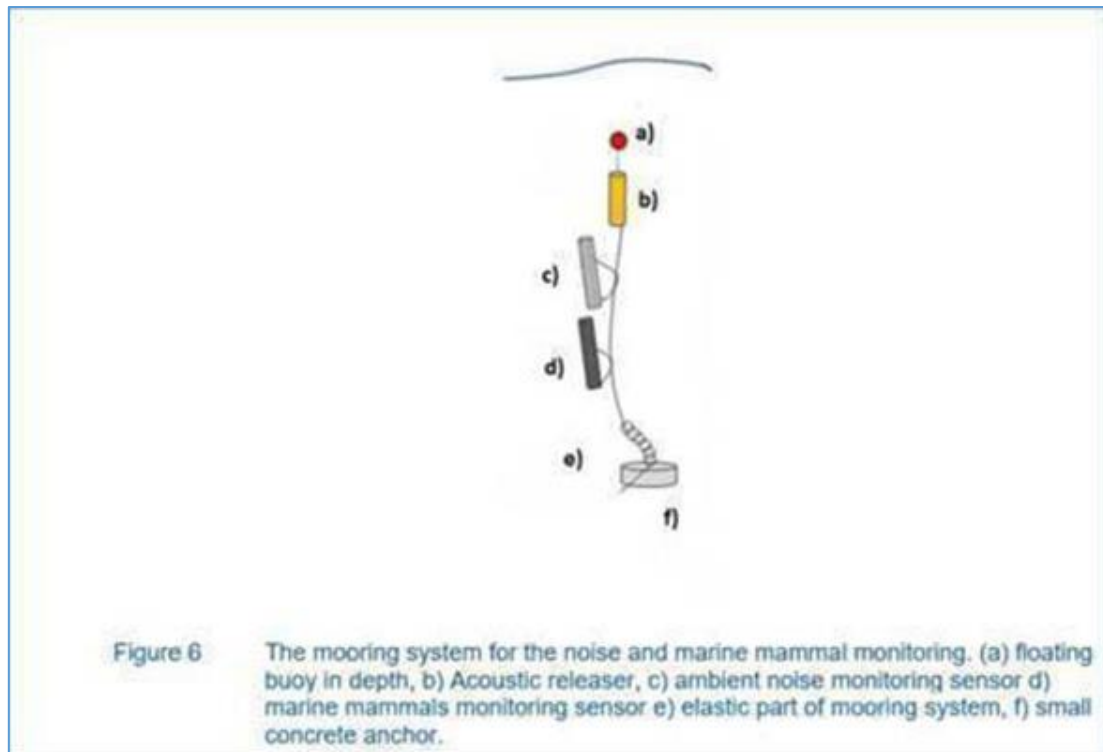
Stationary hydrophones to measure underwater noise have been placed on the seabed at a few locations within the Natura 2000 area *Hoburgs bank och Midsjöbankarna* in Swedish waters (see orange circles in the below map).



Positions of the installed rigs:

Rig ID	Latitude	Longitude
A1	56,1659	17,1364
A2	56,1722	17,1497
A3	56,15979	17,14779
B1	55.9785	17.3412
B2	55.9836	17.3559
B3	55.9919	17.3530
C1	56,32895	18,53138
C2	56,32634	18,51723
C3	56,33748	18,52928

The underwater noise measurements are done due to a direct request from the Swedish authorities as part of Nord Stream 2's obligatory environmental monitoring program. The hydrophone rigs are up to 3 m in height above the seabed and are expected to be in location until May 2019. In order to safeguard the rigs and to avoid the risk of damage to nets and other fishery equipment, fishermen are advised to avoid near-bottom trawling at the below mentioned locations. The image below illustrates how a rig looks like:



5. Exclusion Zones

Nord Stream 2 AG would like to highlight that a safety zone of 1 nautical mile is established around the pipelaying vessel *Solitaire*, and 500 meters around the other vessels performing activities for Nord Stream 2 Project.

Information about the works to be performed in the upcoming weeks, can also be found on the Notices to Mariners web-page, available at:

<https://www.liikennevirasto.fi/ammattimerenkulku/merikartat/merikarttojen-paivityspalvelu/tiedonantoja-merenkulkijoille-vuodesta-2005/2018#.W7HcLiB9jb0>¹

and

<http://www.sjofartsverket.se/sv/Sjofart/Sjokort/Ufs---Underrattelser-for-sjofarande-/Sok-i-databasen11/>

In addition to this information regarding March activities, further notification(s) will follow in due course with regards to Nord Stream 2 construction activities in the coming months.

¹ If you have issues with accessing this link, please copy and paste it into browser.