

Notification to Fishermen

Nord Stream 2 Project

29.01.2019

1. Purpose of this notification

Nord Stream 2 AG hereby submits a notification for the activities to be performed for the Nord Stream 2 Project in February 2019.

During this period, rock placement and pipelay are planned in the Finnish Exclusive Economic Zone (EEZ). Pipelay will also continue in the Swedish EEZ.

Nord Stream 2 AG reminds that the construction vessels have limited manoeuvrability while performing their work and that safety exclusion zones are therefore established around the vessels carrying out the Nord Stream 2 activities.

2. Vessel information

Planned Vessels

Pipelay in Finland and Sweden

Pioneering Spirit – Call sign: 9HA4112



Pioneering Spirit Survey support:

Oceanic – Call sign: 9HA4426



Other supporting vessels to Pioneering Spirit:

Pipe Carriers:

Solvik Supplier, C6ZW5

Havila Crusader, LCAH3

Symphony Performer, PCVX

Sea Supra, LAEW8

Standard Supplier, MBFI6

Supply Ship:

Havila Fortress, C6NX9

Pipelay in Sweden:

Solitaire – Call sign: 9HA4114



Solitaire Survey support:

Fortitude – Call sign: 9HA4717



Other supporting vessels to Solitaire:

Pipe Carriers:

Symphony Provider, PCVX

Standard Provider, MCE59

Standard Princess, MAQY2

Normand Naley, LCOS

Supply ship:

Alegria, LAFU8

Rock placement in Finland:

Rockpiper – Call sign: 5BML3



3. Duration and locations of activities

In February, **rock placement** activities with *Rockpiper* will be carried out in the Finnish jurisdiction.

Pipelay with *Pioneering Spirit* will continue in the beginning of the month in the Finnish EEZ, with pipe supply to be carried out from Kotka and/or Koverhar. The laying direction is from east to west, towards Sweden. The vessel will reach Swedish waters in early February to continue the pipelay southbound along the Nord Stream 2 route east of Gotland.

Solitaire will continue the lay in the Swedish EEZ, with the laying direction from south to north, towards Finland. The pipe supply vessels will shuttle from the pipe logistics bases (Karlshamn, and later on Koverhar) to the pipelay vessel.

Please note that these details are subject to change for operational reasons.

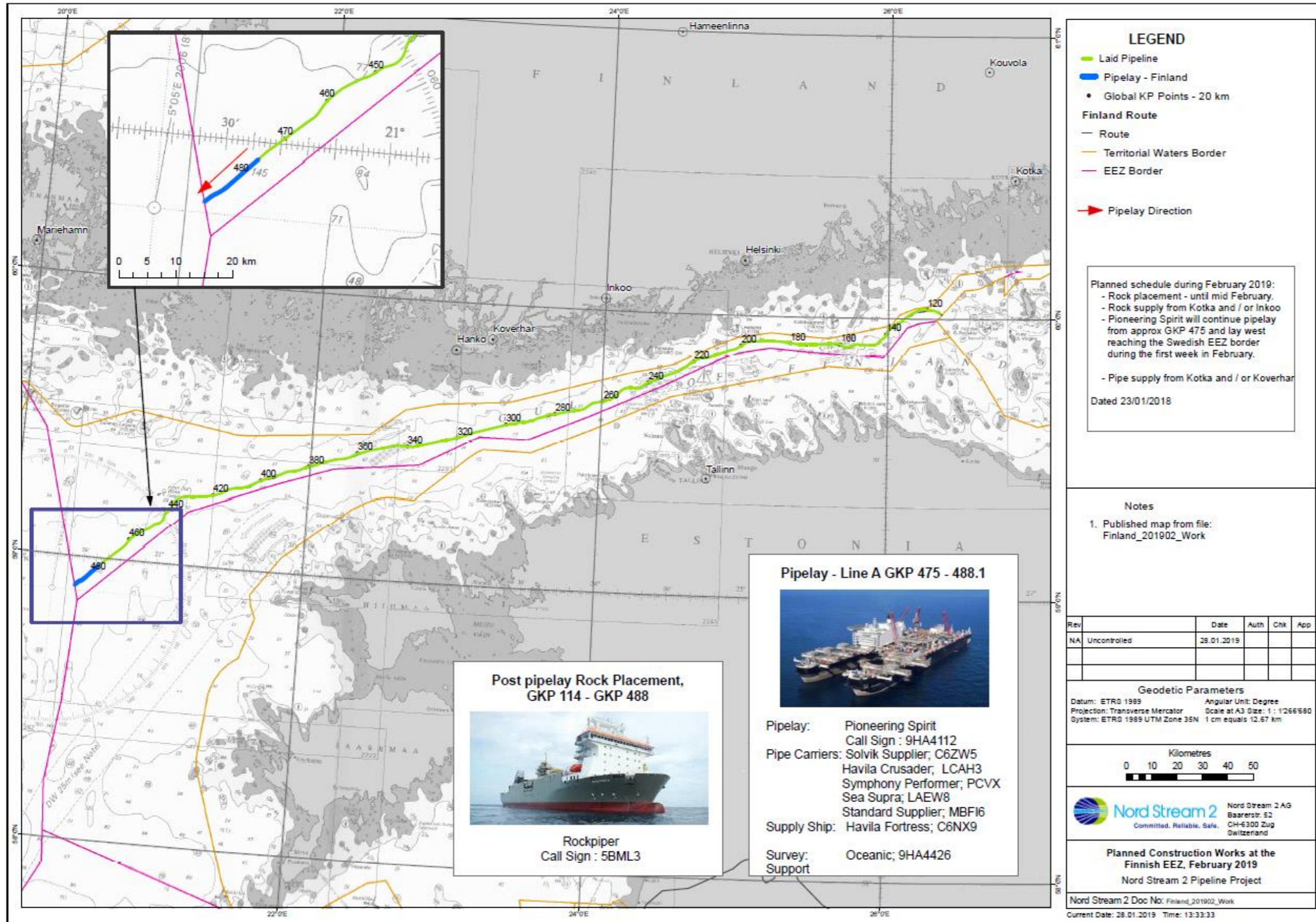


Figure 1: Nord Stream 2 activities in February in the Finnish EEZ

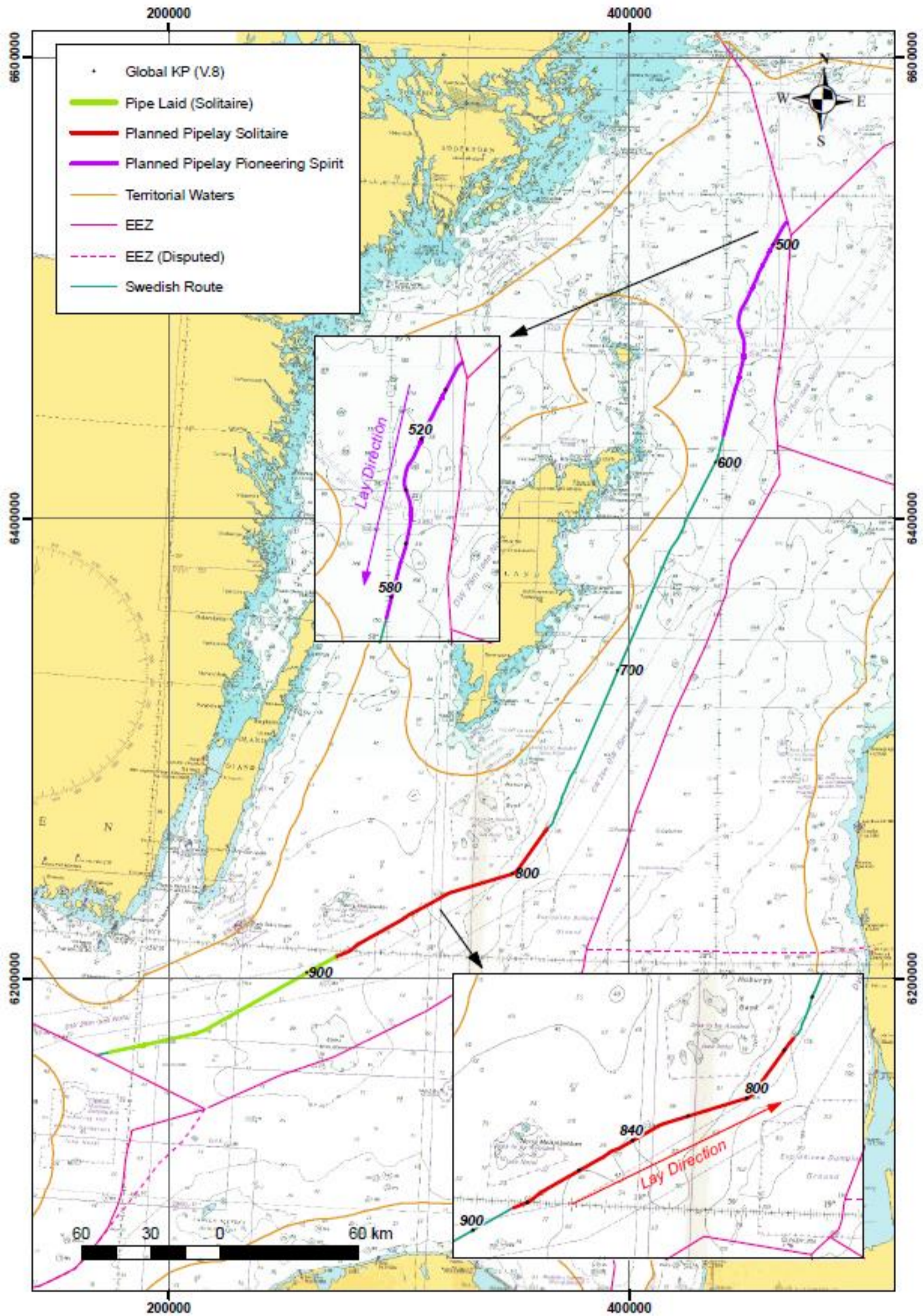
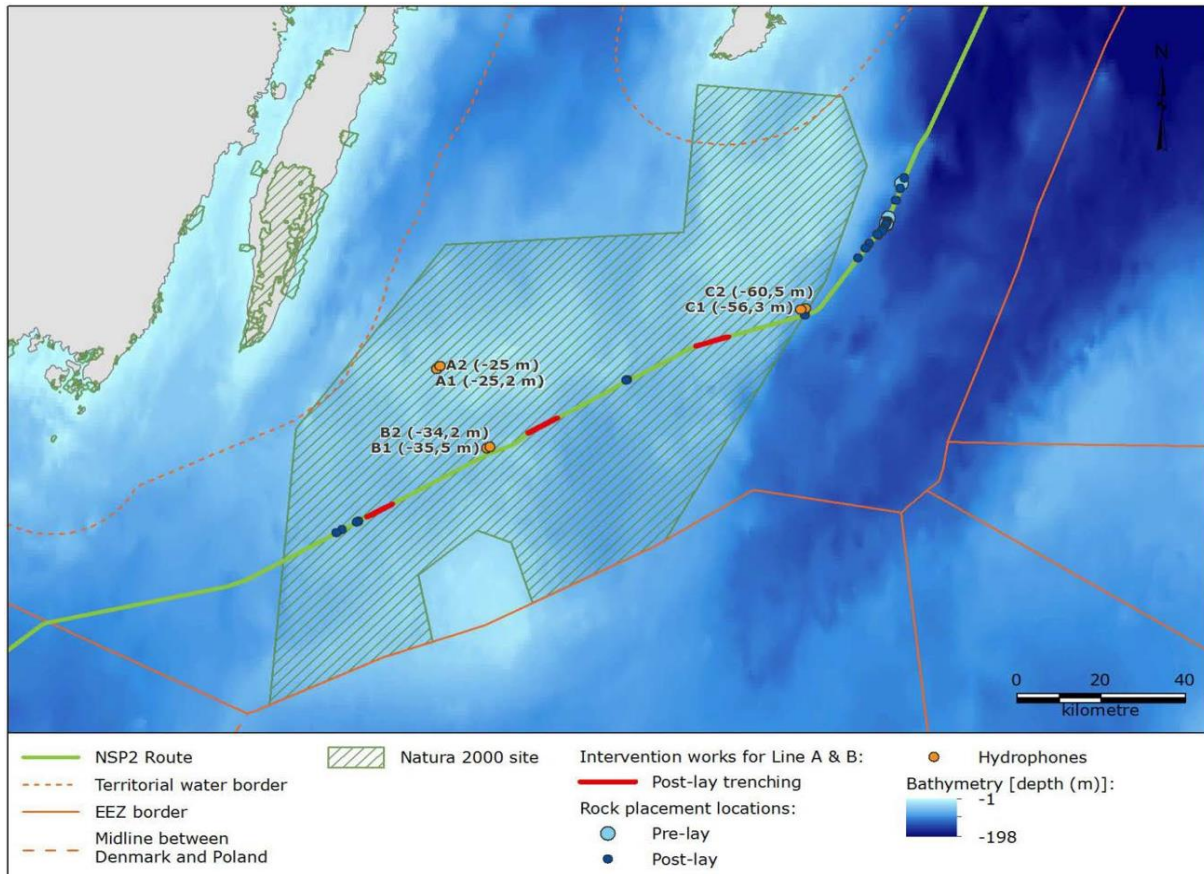


Figure 2: Nord Stream 2 activities in February in the Swedish EEZ

4. Monitoring activities in Swedish waters

Stationary hydrophones to measure underwater noise are placed on the seabed at a few locations within the Natura 2000 area *Hoburgs bank och Midsjöbankarna* in Swedish waters (see orange circles in the below map with approximate coordinates below) as of February.



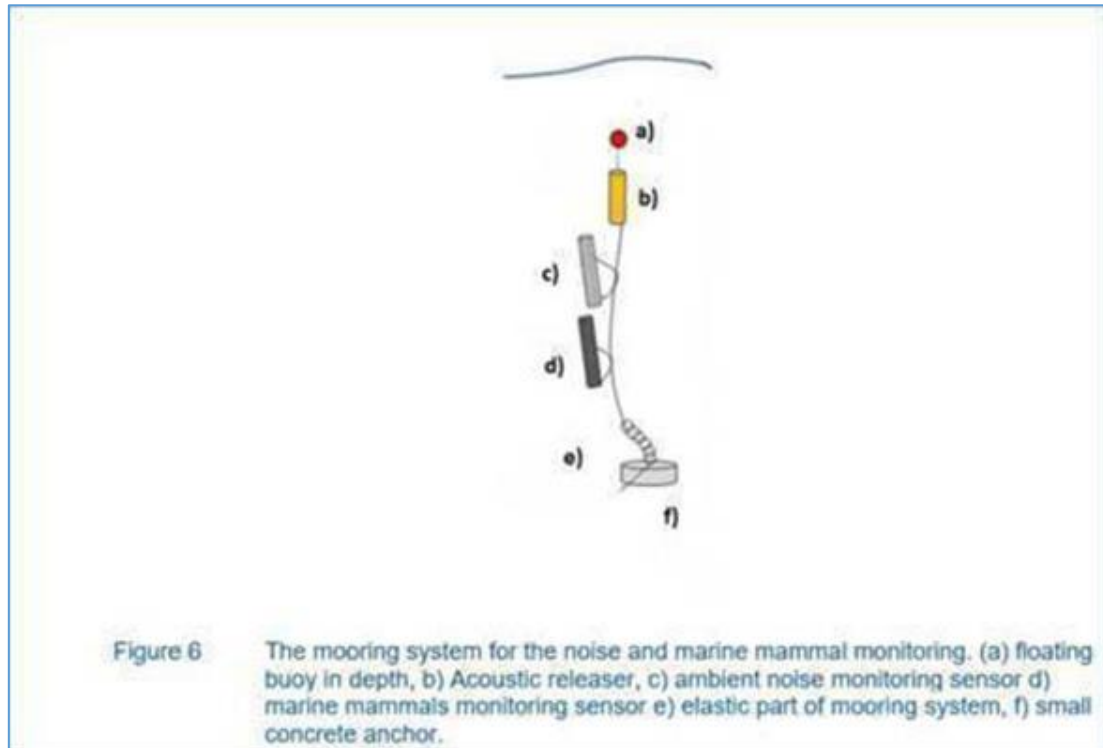
Final positions for the rigs installed at Station B:

RIG ID	LATITUDE	LONGITUDE
B1	55.97858	17.34122
B2	55.98364	17.35592
B3	55.99195	17.35310

Preliminary coordinates for Station A and C (to be installed in February) are:

RIG ID	LATITUDE	LONGITUDE
A1	56.1659	17.1364
A2	56.1722	17.1497
A3	56.15979	17.14779
C1	56.32895	18.53138
C2	56.32634	18.51723
C3	56.33748	18.52928

The underwater noise measurements are done due to a direct request from the Swedish authorities as part of Nord Stream 2's obligatory environmental monitoring program. The hydrophone rigs are up to 3 m in height above the seabed and are expected to be in location until May 2019. In order to safeguard the rigs and to avoid the risk of damage to nets and other fishery equipment, fishermen are advised to avoid near-bottom trawling at the below mentioned locations. The image below illustrates how a rig looks like:



5. Exclusion Zones

Nord Stream 2 AG would like to highlight that a safety zone of 1 nautical mile is established around the pipelaying vessels *Solitaire* and *Pioneering Spirit*, and 500 meters around the other vessels performing activities for Nord Stream 2 Project.

Information about the works to be performed in the upcoming weeks, can also be found on the Notices to Mariners web-page, available at:

<https://www.liikennevirasto.fi/ammattimerenkulku/merikartat/merikarttojen-paivityspalvelu/tiedonantoja-merenkulkijoille-vuodesta-2005/2018#.W7HcLiB9jb0>¹

and

<http://www.sjofartsverket.se/sv/Sjofart/Sjokort/Ufs---Underrattelser-for-sjofarande-/Sok-i-databasen11/>

In addition to this information regarding February activities, further notification(s) will follow in due course with regards to Nord Stream 2 construction activities in the coming months.

¹ If you have issues with accessing this link, please copy and paste it into browser.